

GALENA EIGHT DEPARTURE

AL-1234 (FAA)

FAIRBANKS INTL (FAI) (PAFA)

FAIRBANKS, ALASKA

AK, 11 JUL 2024 to 05 SEP 2024

DEPARTURE ROUTE DESCRIPTION

TAKEOFF RUNWAYS 2L/R: Climb on heading 038° to 2200, then left turn direct FAI VORTAC, thence . . .

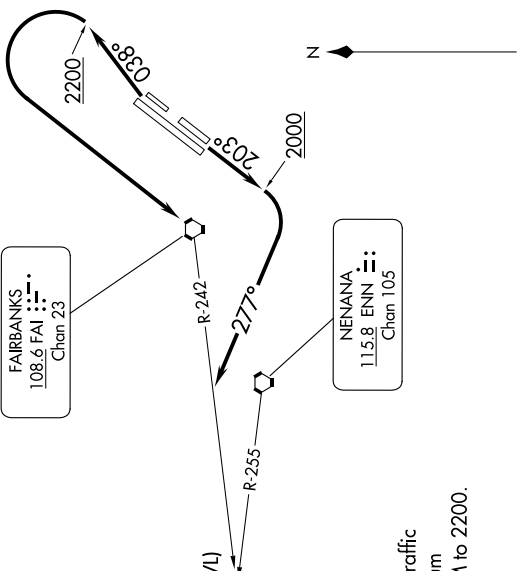
TAKEOFF RUNWAYS 20L/R: Climb on heading 203° to 2000, then right turn heading 277°, thence . . .

. . . intercept FAI R-242 to ENN R-255, then on ENN R-255 and GAL R-077 to GAL VOR/DME, then continue climb on assigned route and altitude.

TOP ALTITUDE: ASSIGNED BY ATC

DME required.

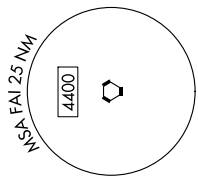
FAIRBANKS DEP CON
125.35/363.2



FAIRBANKS
108.6 FAI
Chan 23

NENANA
115.8 ENN
Chan 105

GALENA
114.8 GAL
Chan 95



TAKEOFF MINIMUMS
 Rws 2, 2W, 20, 20W: NA - Air Traffic
 Rws 2L/R: Standard with minimum
 climb of 230' per NM to 2200.
 Rws 20L/R: Standard.



NOTE: Chart not to scale.

GALENA EIGHT DEPARTURE

AK, 11 JUL 2024 to 05 SEP 2024