

COLD BAY, ALASKA

HI-VOR or TACAN RWY 15

VORTAC CDB 112.6 Chan 73	APCH CRS 145°	Rwy Idg 10,179 TDZE 75 Arprt Elev 100
--	-------------------------	--

AL-1241 [USAF]

COLD BAY (CDB) (PACD)

DME required



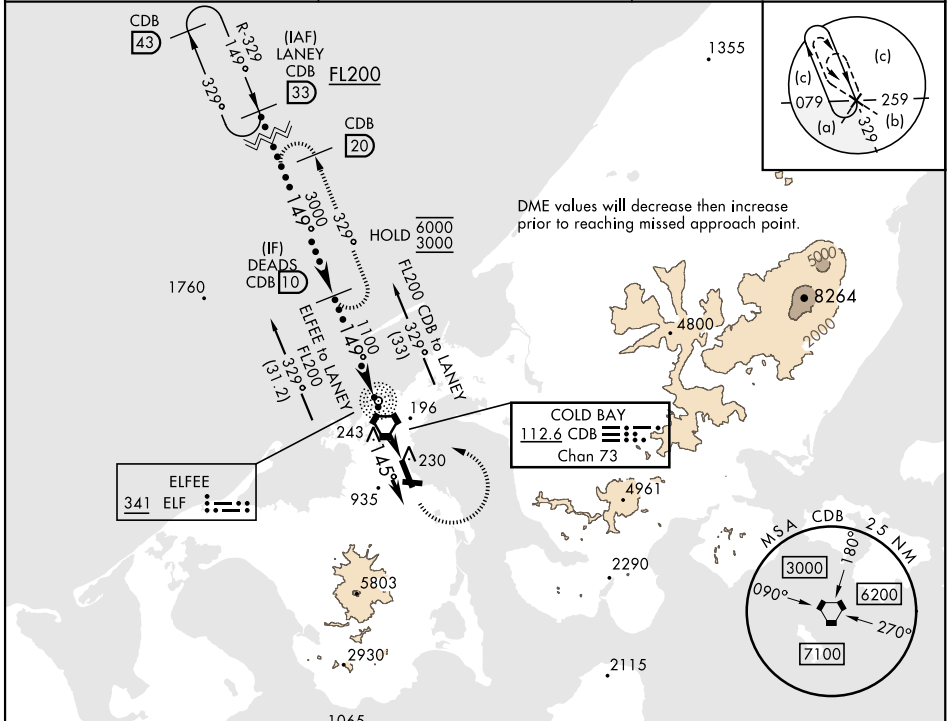
MISSED APPROACH: Climb to 1200, then climbing left turn to 3000 direct CDB VORTAC, then on CDB R-329 to DEADS/CDB 10 DME and hold.

* When ALS inop, increase vis to 1 1/2 miles.
** Circling not authorized SW of Rwy 15-33.

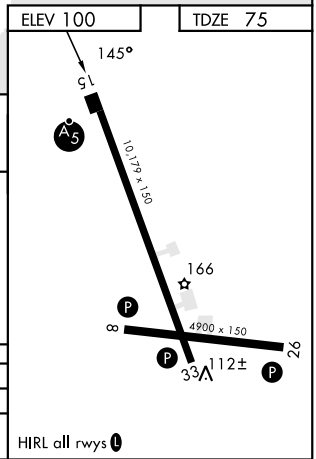
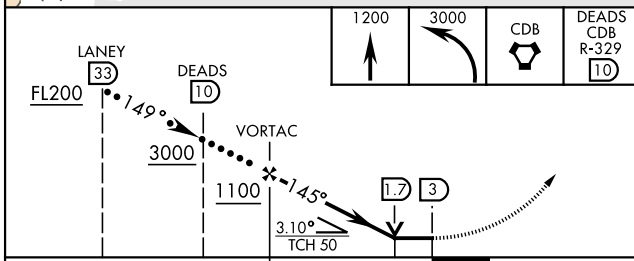
ANCHORAGE CENTER
118.5 278.3

COLD BAY RADIO
123.6 (CTAF)

ASOS
135.75



EMERG SAFE ALT 100 NM 11,600



CATEGORY	C	D	E
S-15*	540/50	465	(500-1)
CIRCLING**	560-1 1/2 460 (500-1 1/2)	860-2 1/2 760 (800-2 1/2)	940-3 840 (900-3)

COLD BAY, ALASKA

55°12'N-162°44'W

COLD BAY (CDB) (PACD)

Amdt 5 02DEC21

HI-VOR or TACAN RWY 15

AK, 11 JUL 2024 to 05 SEP 2024

AK, 11 JUL 2024 to 05 SEP 2024