


VORTAC CDB	APP CRS	Rwy Idg	10179
112.6	145°	TDZE	75
Chan 73		Apt Elev	100

# VOR RWY 15

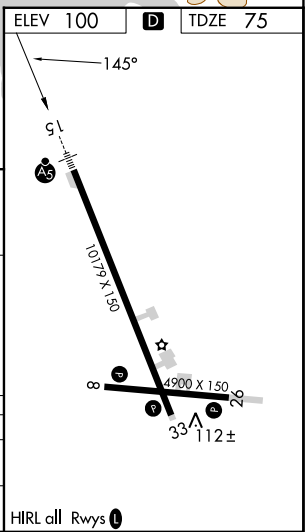
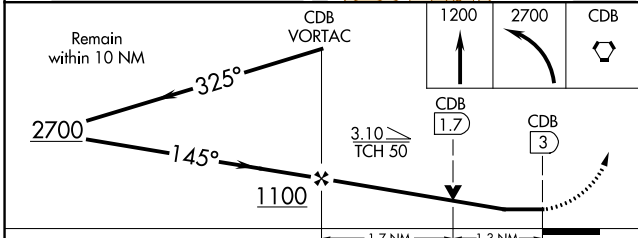
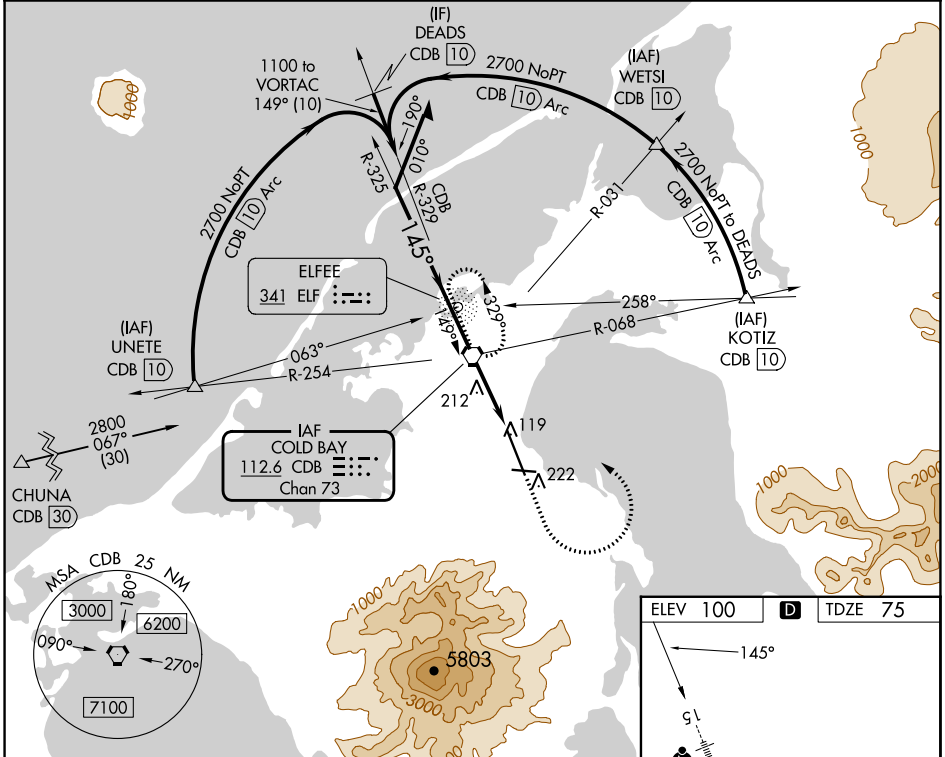
COLD BAY (CDB) (PACD)

DME required.

**⚠** Circling NA for Cat A southwest of Rwy 15-33 at night.  
DME values will decrease then increase prior to reaching missed approach point. For inop ALS, increase S-15 Cats C and D visibility to RVR 6000. Circling NA for Cats B/C/D southwest of Rwy 15-33

MALSR  
 MISSED APPROACH: Climb to 1200 then climbing left turn to 2700 direct CDB VORTAC and hold; continue climb-in-hold to 2700.

ASOS <b>135.75</b>	ANCHORAGE CENTER <b>118.5 278.3</b>	COLD BAY RADIO★ <b>123.6 (CTAF)</b>
-----------------------	--	--



CATEGORY	A	B	C	D
S-15	480/24	405 (400-½)	480/40	405 (400-¾)
<b>C</b> CIRCLING	540-1 440 (500-1)	560-1 460 (500-1)	560-1½ 460 (500-1½)	860-2½ 760 (800-2½)

HIRL all Rwy's **Ⓛ**

AK, 11 JUL 2024 to 05 SEP 2024

AK, 11 JUL 2024 to 05 SEP 2024