

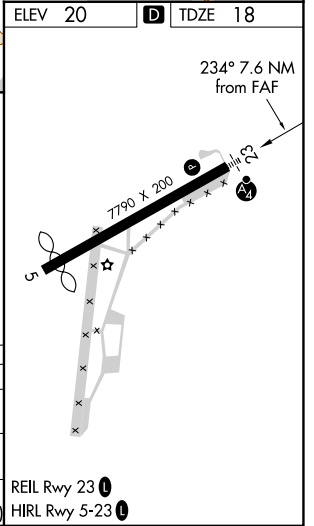
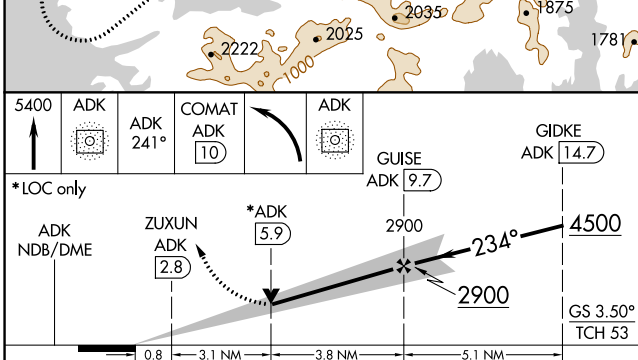
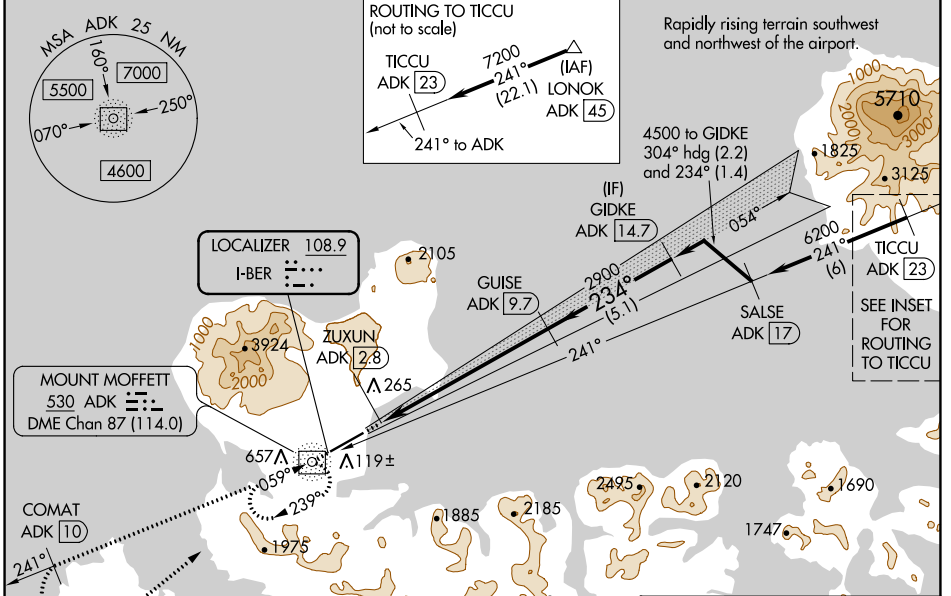
LOC I-BER	APP CRS	Rwy ldg	6190
108.9	234°	TDZE	18
		Apt Elev	20

ILS Y or LOC Y RWY 23

ADAK (ADK) (PADK)

ADF and DME required.		MALS	MISSED APPROACH: Climb to 5400 direct ADK NDB/DME and on the 241° bearing from ADK NDB/DME to COMAT/ADK 10 DME and left turn direct ADK NDB/DME and hold.
⚠ Circling NA at night. Circling NA northwest of Rwy 5-23. ⚠ Rwy 23 helicopter visibility reduction below 3/4 SM NA. DME from ADK NDB/DME. Simultaneous reception of I-BER and ADK DME required. Cat E for USAF/USN use only.			

AWOS-3P 134.5	ANCHORAGE CENTER 126.4 254.3	CTAF 122.9 0
-------------------------	--	------------------------



ELEV 20	TDZE 18				
5400 ADK	COMAT ADK 10	GIDKE ADK 14.7			
ADK 241°	ADK	ADK			
*LOC only					
ADK NDB/DME	ZUXUN ADK 2.8	*ADK 5.9	2900	4500	
			2900	2900	
				GS 3.50°	
				TCH 53	
	0.8	3.1 NM	3.8 NM	5.1 NM	
CATEGORY	A	B	C	D	E
S-ILS 23	1572-5 1554 (1600-5)				
S-LOC 23	1520-1 1/4 1502 (1500-1 1/4)	1520-1 1/2 1502 (1500-1 1/2)	1520-3 1502 (1500-3)		
CIRCLING	1520-1 1/4 1500 (1500-1 1/4)	1520-1 1/2 1500 (1500-1 1/2)	1520-3 1500 (1500-3)	2400-3 2380 (2400-3)	2440-3 2420 (2500-3)
				REIL Rwy 23 0	HIRL Rwy 5-23 0

AK, 11 JUL 2024 to 05 SEP 2024

AK, 11 JUL 2024 to 05 SEP 2024