

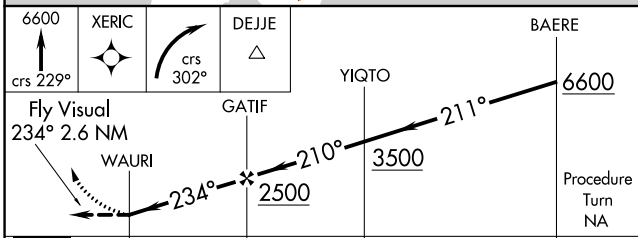
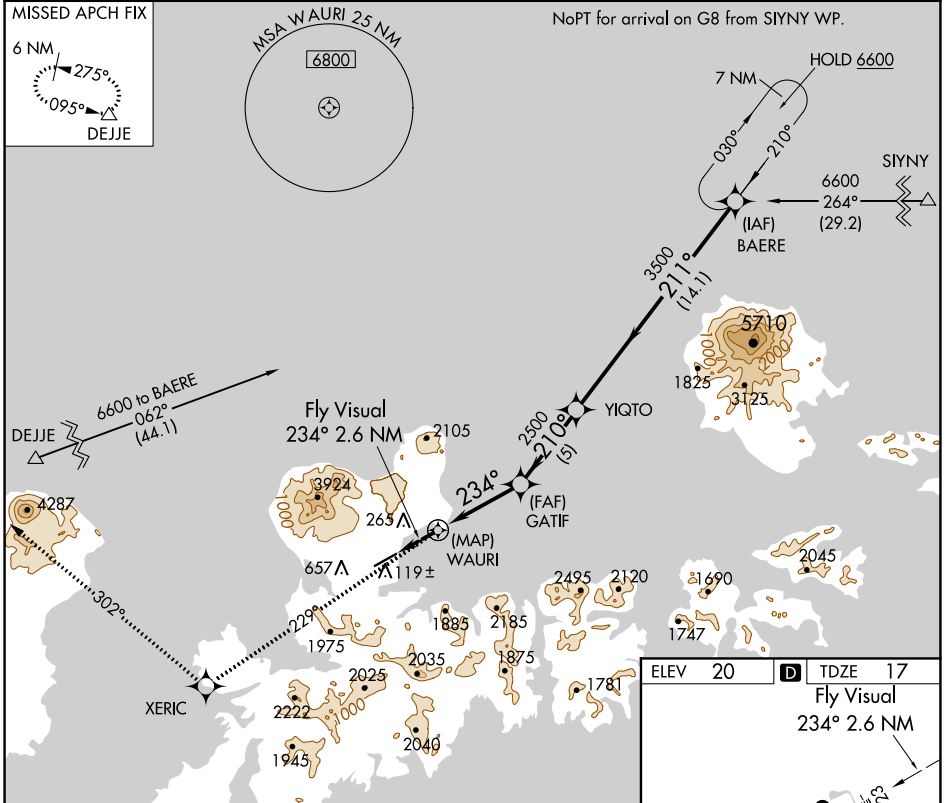
APP CRS	Rwy Idg	6190
234°	TDZE	17
	Apt Elev	20

RNAV (GPS) RWY 23

ADAK (ADK)(PADK)

RNP APCH-GPS.	MALS	MISSED APPROACH: Climb to 6600 on course 229° to XERIC, and right turn on course 302° to DEJJE and hold.
Circling not authorized at night. Circling NA northwest of Rwy 5-23.		

AWOS-3P 134.5	ANCHORAGE CENTER 126.4 254.3	CTAF 122.9
-------------------------	----------------------------------------	----------------------



CATEGORY	A	B	C	D
LNAV MDA	1220-3 1203 (1200-3)			
CIRCLING	1220-3	1200 (1200-3)	NA	

ELEV 20	TDZE 17
Fly Visual 234° 2.6 NM	

REIL Rwy 23
HIRL Rwy 5-23

AK, 11 JUL 2024 to 05 SEP 2024

AK, 11 JUL 2024 to 05 SEP 2024