

# RNAV (GPS) RWY 33

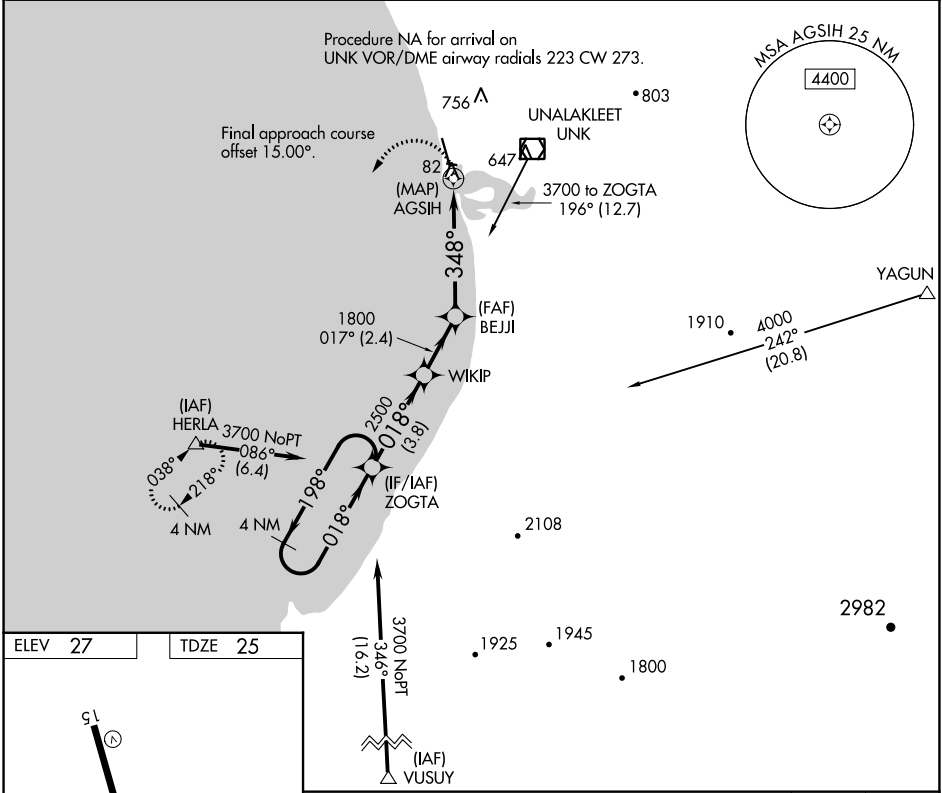
UNALAKLEET (UNK)(PAUN)

APP CRS <b>348°</b>	Rwy Idg TDZE Apt Elev	<b>5900</b> <b>25</b> <b>27</b>
------------------------	-----------------------------	---------------------------------------

**⚠** Circling NA east of Rwy 15-33. Circling Rwy 9 NA at night.  
**⚠** Rwy 33 helicopter visibility reduction below 3/4 SM NA.  
 DME/DME RNP-0.3 NA.

**MISSED APPROACH:**  
 Climbing left turn to 3700  
 direct HERLA and hold,  
 continue climb-in-hold to 3700.

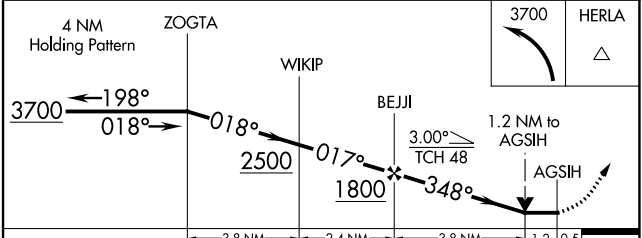
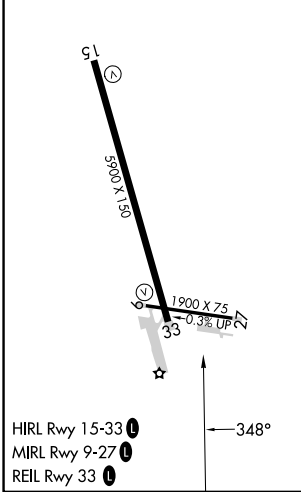
AWOS-3P <b>132.25</b>	ANCHORAGE CENTER <b>135.7 335.5</b>	NOME RADIO <b>122.3</b>	CTAF <b>123.0</b>
--------------------------	--	----------------------------	----------------------



AK, 11 JUL 2024 to 05 SEP 2024

AK, 11 JUL 2024 to 05 SEP 2024

ELEV 27	TDZE 25
---------	---------



CATEGORY	A	B	C	D
LNNAV MDA	600-1	575 (600-1)	600-1½	575 (600-1½)
<b>C</b> CIRCLING	600-1 573 (600-1)	700-1 673 (700-1)	700-2 673 (700-2)	860-2¾ 833 (900-2¾)