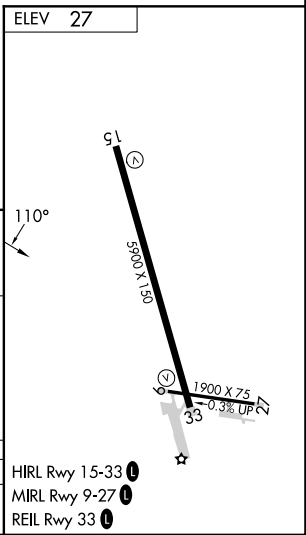
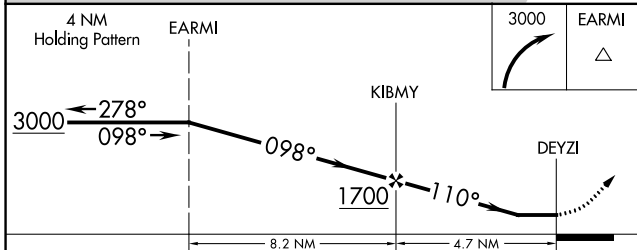
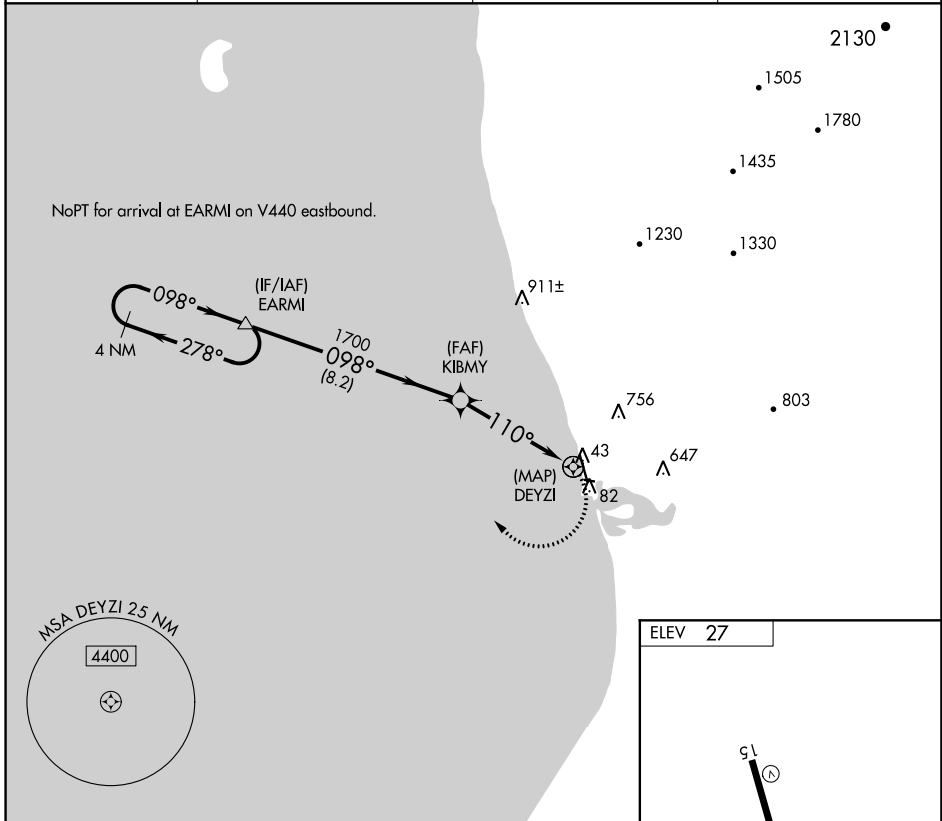


**RNAV (GPS)-A**  
UNALAKLEET (UNK)(PAUN)

APP CRS <b>110°</b>	Rwy Idg TDZE Apt Elev	<b>N/A</b> <b>N/A</b> <b>27</b>
------------------------	-----------------------------	---------------------------------------

<p><b>▽</b> <b>▲</b></p> <p>Circling to Rwy 9 NA at night. Circling NA east of Rwy 15-33. DME/DME RNP-0.3 NA.</p>	<p>MISSED APPROACH: Climbing right turn to 3000 direct EARMI and hold.</p>
---	--

AWOS-3P <b>132.25</b>	ANCHORAGE CENTER <b>135.7 335.5</b>	NOME RADIO <b>122.3</b>	CTAF <b>123.0</b>
--------------------------	--	----------------------------	----------------------



CATEGORY	A	B	C	D
<b>CIRCLING</b>	400-1 373 (400-1)	700-1 673 (700-1)	700-2 673 (700-2)	860-2¾ 833 (900-2¾)

HIRL Rwy 15-33 **Ⓛ**  
MRL Rwy 9-27 **Ⓛ**  
REIL Rwy 33 **Ⓛ**

AK, 11 JUL 2024 to 05 SEP 2024

AK, 11 JUL 2024 to 05 SEP 2024