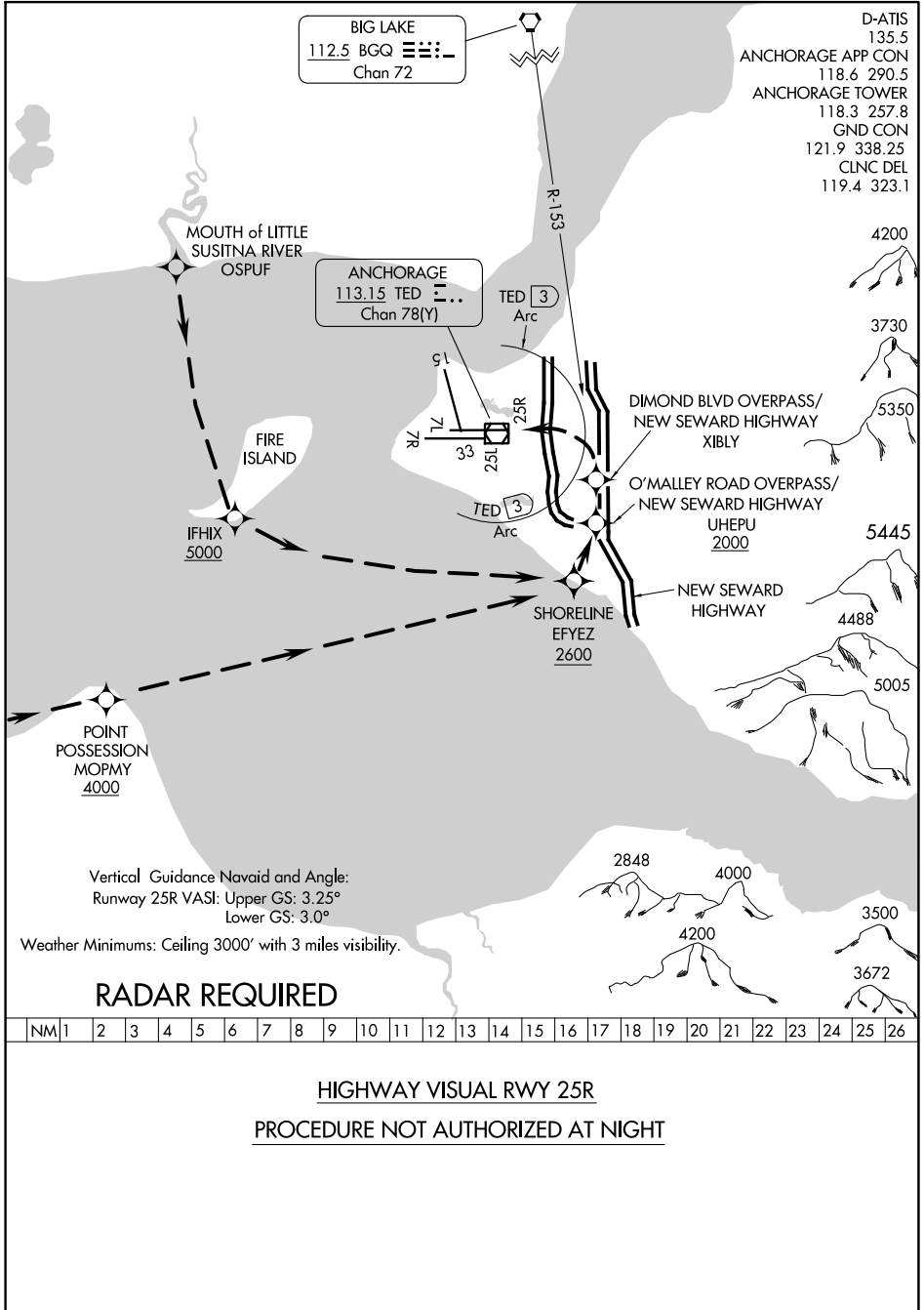


# HIGHWAY VISUAL RWY 25R

TED STEVENS ANCHORAGE INTL (ANC) (PANC)  
AL-1500 (FAA) ANCHORAGE, ALASKA



BIG LAKE  
112.5 BQG Chan 72

ANCHORAGE  
113.15 TED Chan 78(Y)

D-ATIS 135.5  
ANCHORAGE APP CON 118.6 290.5  
ANCHORAGE TOWER 118.3 257.8  
GND CON 121.9 338.25  
CLNC DEL 119.4 323.1

Vertical Guidance Navaid and Angle:  
Runway 25R VASI: Upper GS: 3.25°  
Lower GS: 3.0°  
Weather Minimums: Ceiling 3000' with 3 miles visibility.

### RADAR REQUIRED

NM	1	2	3	4	5	6	7	8	9	10	11	12	13	14	15	16	17	18	19	20	21	22	23	24	25	26
----	---	---	---	---	---	---	---	---	---	----	----	----	----	----	----	----	----	----	----	----	----	----	----	----	----	----

HIGHWAY VISUAL RWY 25R  
PROCEDURE NOT AUTHORIZED AT NIGHT

AK, 11 JUL 2024 to 05 SEP 2024

AK, 11 JUL 2024 to 05 SEP 2024