

(TAGER.TAGER9) 24025

TAGER NINE ARRIVAL

TED STEVENS ANCHORAGE INTL (ANC)(PANC)

AL-1500 (FAA)

ANCHORAGE, ALASKA

ANCHORAGE APP CON
118.6 290.5
D-ATIS
135.5

DME required.
RADAR required.

NENANA
115.8 ENN :
Chan 105

GALENA
114.8 GAL :
Chan 95

MC GRATH
115.5 MCG :
Chan 102

TALKEETNA
116.2 TKA :
Chan 109

BIG LAKE
112.5 BGQ :
Chan 72

ANCHORAGE
113.15 TED :
Chan 78(Y)

5000
Ldg PANC

NOTE: Chart not to scale.

ARRIVAL ROUTE DESCRIPTION

FFITZ TRANSITION (FFITZ.TAGER9): From over FFITZ on BGQ R-275 to TAGER. Thence . . .

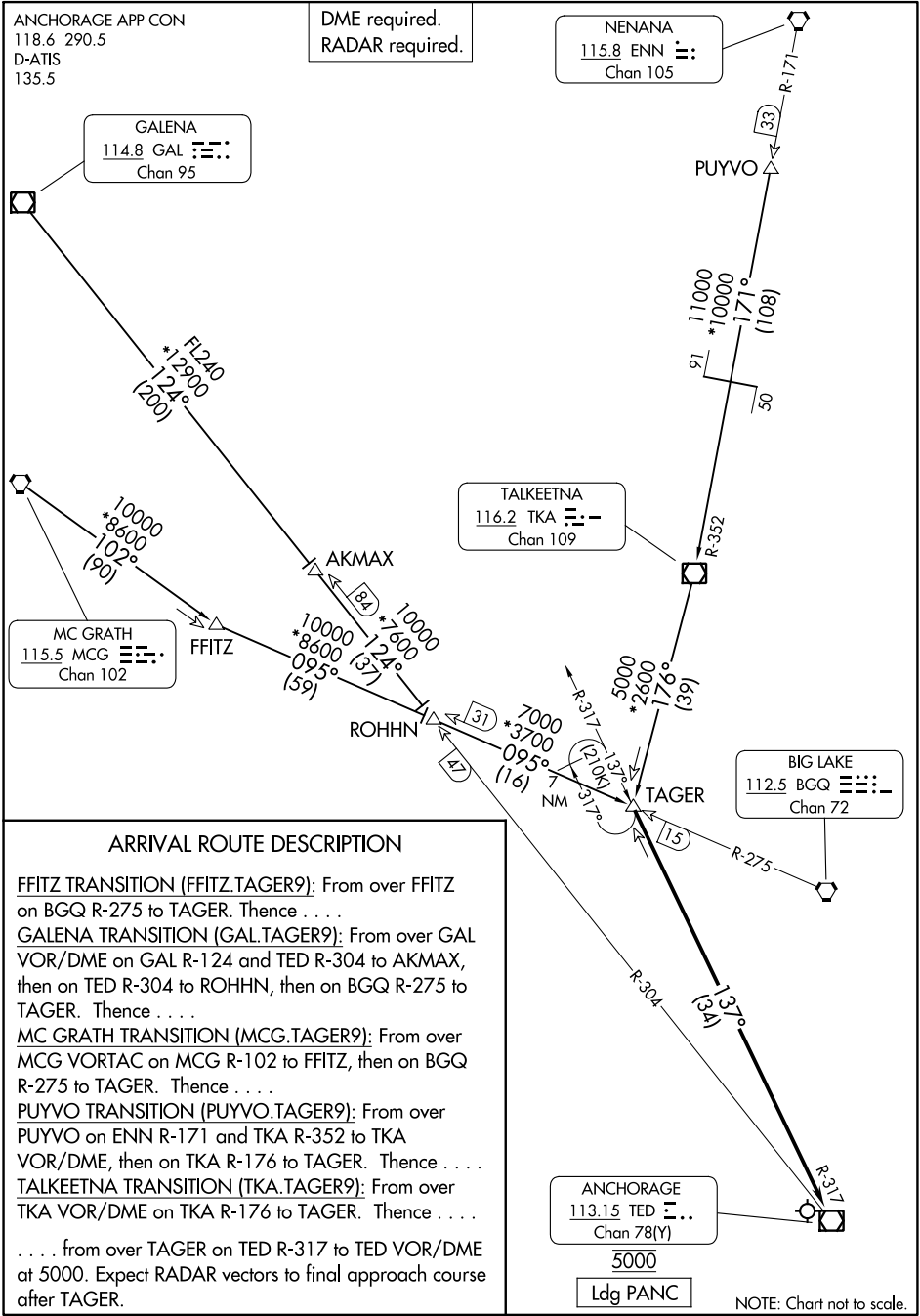
GALENA TRANSITION (GAL.TAGER9): From over GAL VOR/DME on GAL R-124 and TED R-304 to AKMAX, then on TED R-304 to ROHHN, then on BGQ R-275 to TAGER. Thence . . .

MC GRATH TRANSITION (MCG.TAGER9): From over MCG VORTAC on MCG R-102 to FFITZ, then on BGQ R-275 to TAGER. Thence . . .

PUYVO TRANSITION (PUYVO.TAGER9): From over PUYVO on ENN R-171 and TKA R-352 to TKA VOR/DME, then on TKA R-176 to TAGER. Thence . . .

TALKEETNA TRANSITION (TKA.TAGER9): From over TKA VOR/DME on TKA R-176 to TAGER. Thence . . .

. . . from over TAGER on TED R-317 to TED VOR/DME at 5000. Expect RADAR vectors to final approach course after TAGER.



AK, 11 JUL 2024 to 05 SEP 2024

AK, 11 JUL 2024 to 05 SEP 2024

TAGER NINE ARRIVAL

(TAGER.TAGER9) 29DEC22

TED STEVENS ANCHORAGE INTL (ANC)(PANC)
ANCHORAGE, ALASKA