

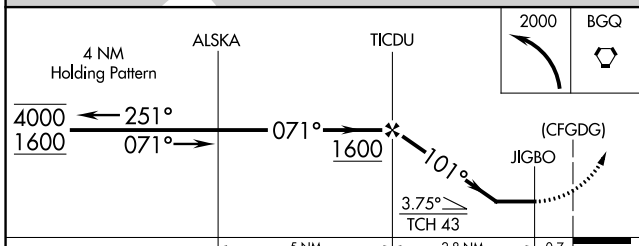
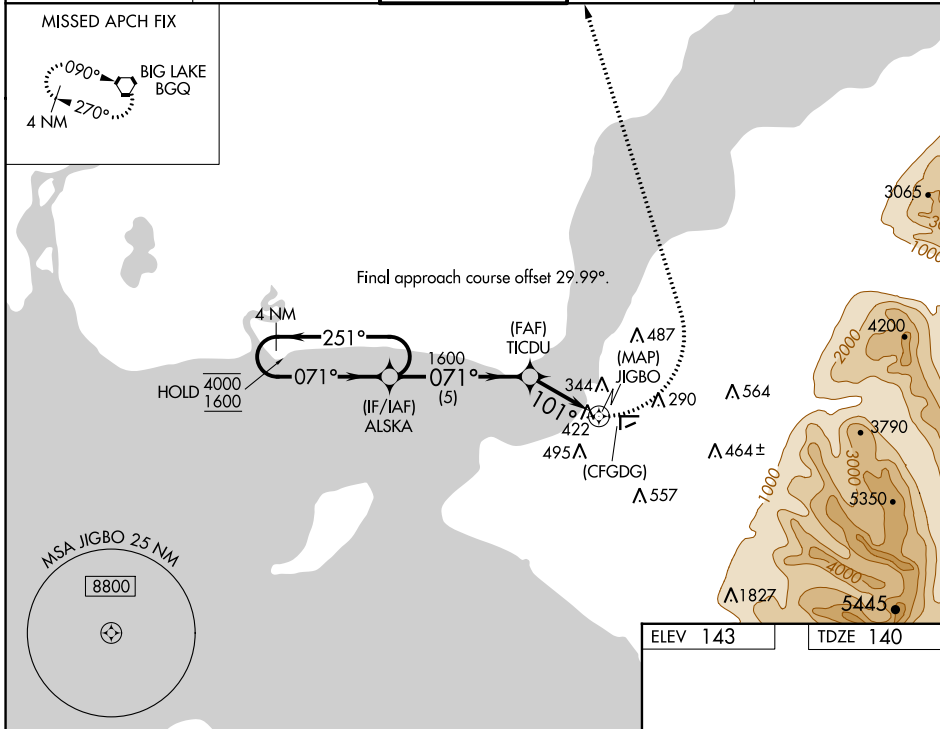
WAAS CH <b>51874</b> <b>W07A</b>	APP CRS <b>101°</b>	Rwy Idg <b>4000</b> TDZE <b>140</b> Apr Elev <b>143</b>
--	------------------------	---

# RNAV (GPS) Z RWY 7

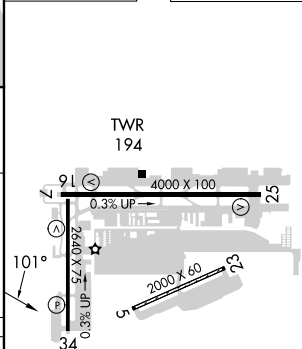
MERRILL FLD (MRI) (PAMR)

RNP APCH - GPS.		MISSED APPROACH: Climbing left turn to 2000 direct BQG VORTAC and hold.	
RADAR required for procedure entry.			
<p><b>⚠</b> When local altimeter setting not received, use Ted Stevens Anchorage Intl altimeter setting and increase all MDAs 20 feet. Circling Rwy 16, 34, 5 and 23 NA at night. Helicopter visibility reduction below 1 SM NA.</p>			

ATIS <b>124.25</b>	ANCHORAGE APP CON <b>119.1 363.2</b>	MERRILL TOWER * <b>126.0 (CTAF) 0</b>	GND CON <b>121.7</b>	UNICOM <b>122.95</b>
-----------------------	---	--	-------------------------	-------------------------



ELEV 143	TDZE 140
----------	----------



CATEGORY	A	B	C	D
LP MDA	660-1	520 (600-1)		NA
LNAV MDA	680-1	540 (600-1)		NA
CIRCLING	740-1 597 (600-1)	800-1 657 (700-1)		NA

REIL Rwy 7, 16, 25, and 34 **0**  
MIRL Rwy 7-25 and 16-34 **0**

AK, 11 JUL 2024 to 05 SEP 2024

AK, 11 JUL 2024 to 05 SEP 2024