

HAWGG EIGHT DEPARTURE (HAWGG8•HAWGG)

EIELSON AFB (PAEI)

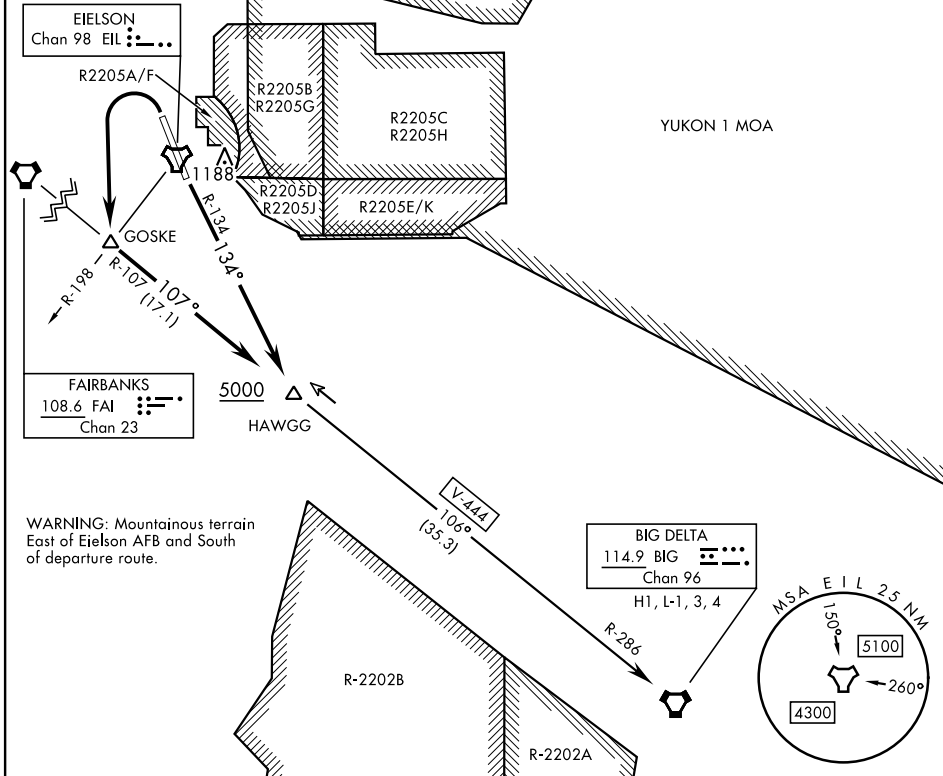
FAIRBANKS, ALASKA

ATIS ★ 119.9 273.5	AL-1729 [USAF]	YUKON 2 MOA	Rwy	Knots	60	120	180	240	300	360
CLNC DEL 343.7			32	V/V(fpm)	214	428	642	856	1070	1284
GND CON 121.8 275.8			14	V/V(fpm)	241	482	723	964	1205	1446

ATC Climb Rate to 5000

RADAR required

4698 •



AK, 11 JUL 2024 to 05 SEP 2024

AK, 11 JUL 2024 to 05 SEP 2024

DEPARTURE ROUTE DESCRIPTION

TAKEOFF RWY 14: Turn left to join EIL TACAN R-134 to FAI VORTAC R-107. Cross HAWGG at or above 5000. Thence...

TAKEOFF RWY 32: Turn left to GOSKE then continue outbound FAI VORTAC R-107 to HAWGG. Cross HAWGG at or above 5000. Thence...

...intercept V-444 to BIG VORTAC, then via assigned route.

HAWGG EIGHT DEPARTURE (HAWGG8•HAWGG)

Orig 20APR23

FAIRBANKS, ALASKA

EIELSON AFB (PAEI)