

FAIRBANKS, ALASKA

# ILS Y or LOC/DME Y RWY 32

LOC I-FAF <b>109.9</b>	APCH CRS <b>320°</b>	Rwy lgt <b>14,530</b> TDZE <b>548</b> Arprt Elev <b>548</b>
---------------------------	-------------------------	---

AL-1729 [USAF]

EIELSON AFB (PAEI)

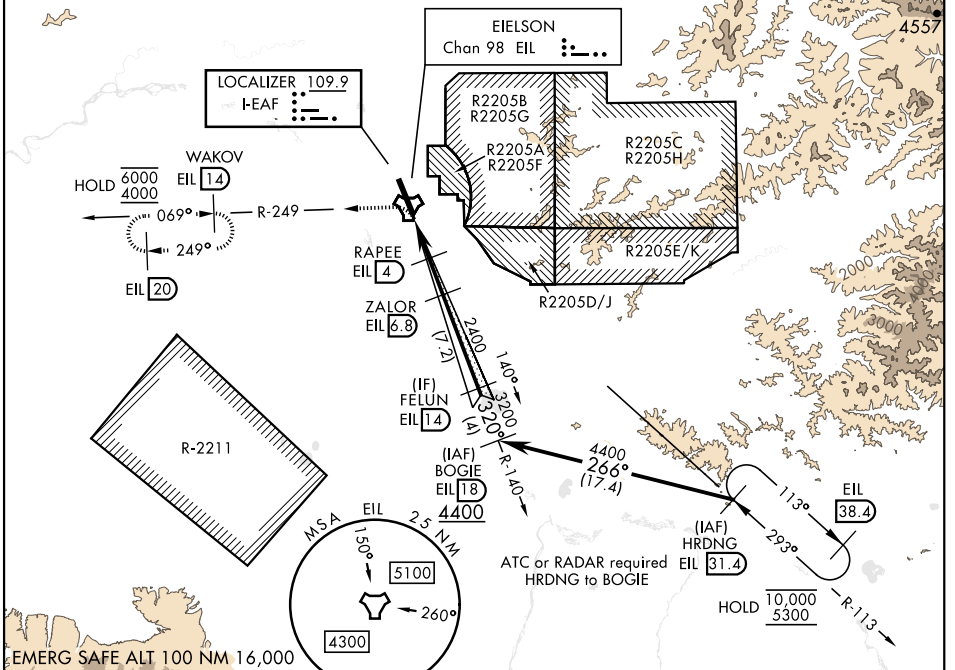
▼ \* When ALS inop, increase RVR to 40 and vis to ¼ mile.  
 \*\* When ALS inop, increase CAT AB RVR to 55, vis to 1 mile; CAT CDE RVR to 60, vis to 1½ mile.



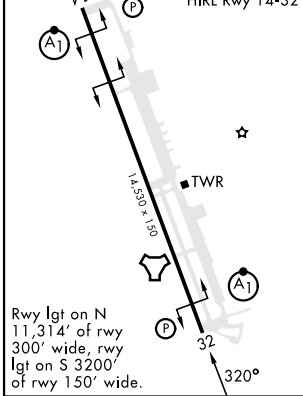
MISSED APPROACH: Climbing left turn on EIL R-249 to 4000 to WAKOV and hold. Continue climb-in-hold.

ATIS ★ <b>119.9 273.5</b>	FAIRBANKS APP CON <b>127.1 251.1 360° - 179°</b> <b>125.35 363.2 180° - 359°</b>	TOWER ★ <b>127.2 352.05</b>	GND CON <b>121.8 275.8</b>	CLNC DEL <b>343.7</b>
------------------------------	--	--------------------------------	-------------------------------	--------------------------

\*\*\* Circling not authorized E of Rwy 14-32.  
 Missed approach requires the use of RNAV or ATC RADAR monitoring.

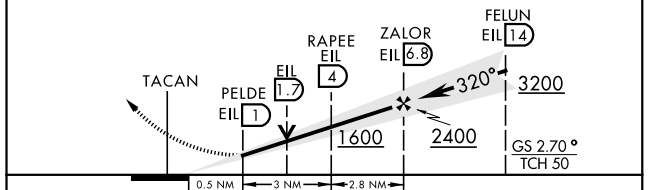


ELEV <b>548</b>	TDZE <b>548</b>
-----------------	-----------------



VGSI and ILS glidepath not coincident (VGSI angle 2.70/TCH 44).

4000	WAKOV R-249
EIL R-249	14



CATEGORY	A	B	C	D	E
S-ILS 32*	748/24 200 (200-½)				
S-LOC 32**	960/24	412 (500-½)	960/40	412	500-¾
CIRCLING***	1000-1 452 (500-1)	1040-1 492 (500-1)	1040-1½ 492 (500-1½)	1280-2¼ 732 (800-2¼)	1280-2½ 732 (800-2½)

FAIRBANKS, ALASKA  
 Orig 15JUN23

64° 40' N-147° 06' W

EIELSON AFB (PAEI)

# ILS Y or LOC/DME Y RWY 32

AK, 11 JUL 2024 to 05 SEP 2024

AK, 11 JUL 2024 to 05 SEP 2024