

TACAN Y RWY 32

TACAN EIL Chan 98	APCH CRS 320°	Rwy Ldg 14,530 TDZE 548 Arprt Elev 548	AL-1729 [USAF]	EIELSON AFB (PAEI)
-----------------------------	-------------------------	---	----------------	--------------------

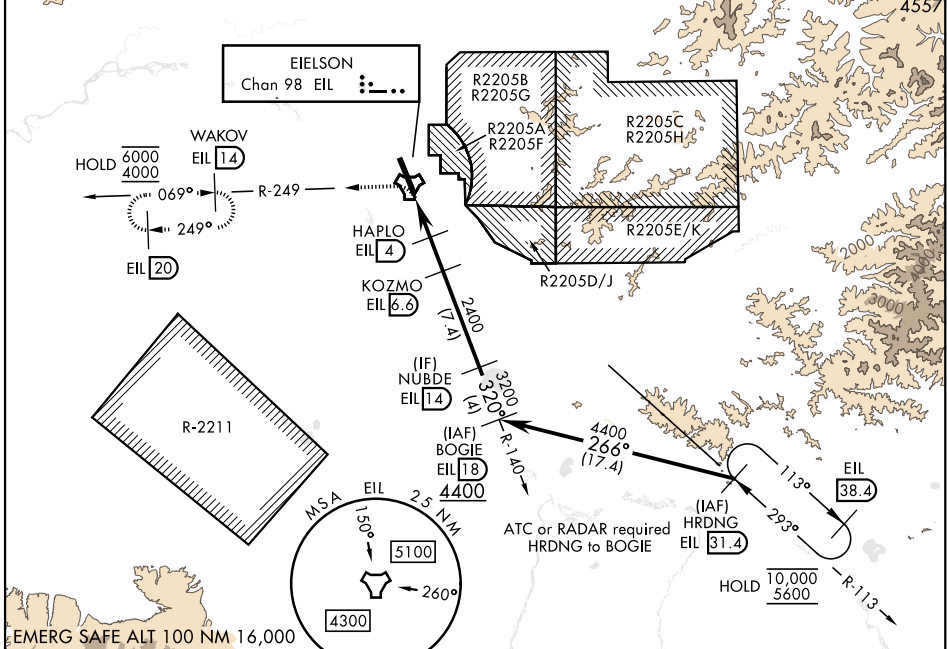
▼ * When ALS inop., increase CAT AB RVR to 55, vis to 1 mile; CAT CDE vis to 1½ miles.
 ** Circling not authorized E of Rwy 14-32.



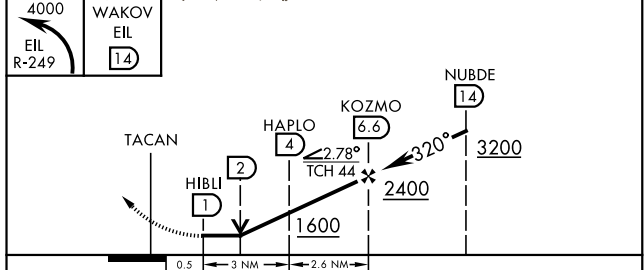
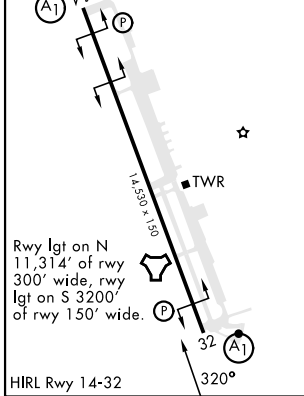
MISSED APPROACH: Climbing left turn on EIL R-249 to 4000 to WAKOV and hold. Continue climb-in-hold.

ATIS ★ 119.9 273.5	FAIRBANKS APP CON 127.1 251.1 360° - 179° 125.35 363.2 180° - 359°	TOWER ★ 127.2 352.05	GND CON 121.8 275.8	CLNC DEL 343.7
------------------------------	--	--------------------------------	-------------------------------	--------------------------

Missed approach requires the use of RNAV or ATC RADAR monitoring.
 CAUTION: Uncontrolled airspace below 700' AGL outside EIL CLASS D.



ELEV 548	TDZE 548
----------	----------



CATEGORY	A	B	C	D	E
S-32*	1040/24 492 (500-½)		1040/50 492 (500-1)		
**			1040-1½ 492 (500-1½)	1280-2¼ 732 (800-2¼)	1280-2½ 732 (800-2½)
☑ CIRCLING	1040-1 492 (500-1)				

TACAN Y RWY 32

AK, 11 JUL 2024 to 05 SEP 2024

AK, 11 JUL 2024 to 05 SEP 2024