

# TACAN Z RWY 32

TACAN EIL Chan <b>98</b>	APCH CRS <b>320°</b>	Rwy ldg <b>14,530</b> TDZE <b>548</b> Arpt Elev <b>548</b>
-----------------------------	-------------------------	--

AL-1729 [USAF]

EIELSON AFB (PAEI)

DME or RADAR required. RADAR required b/n FALCO-WAKOV.

ALSF-1

MISSED APPROACH: Climbing left turn on EIL R-249 to 4000 to WAKOV and hold. Continue climb in hold.

▼ \*When ALS inop, increase CAT AB RVR to 55, vis to 1 mile; CAT CDE vis to 1 3/8 mile.

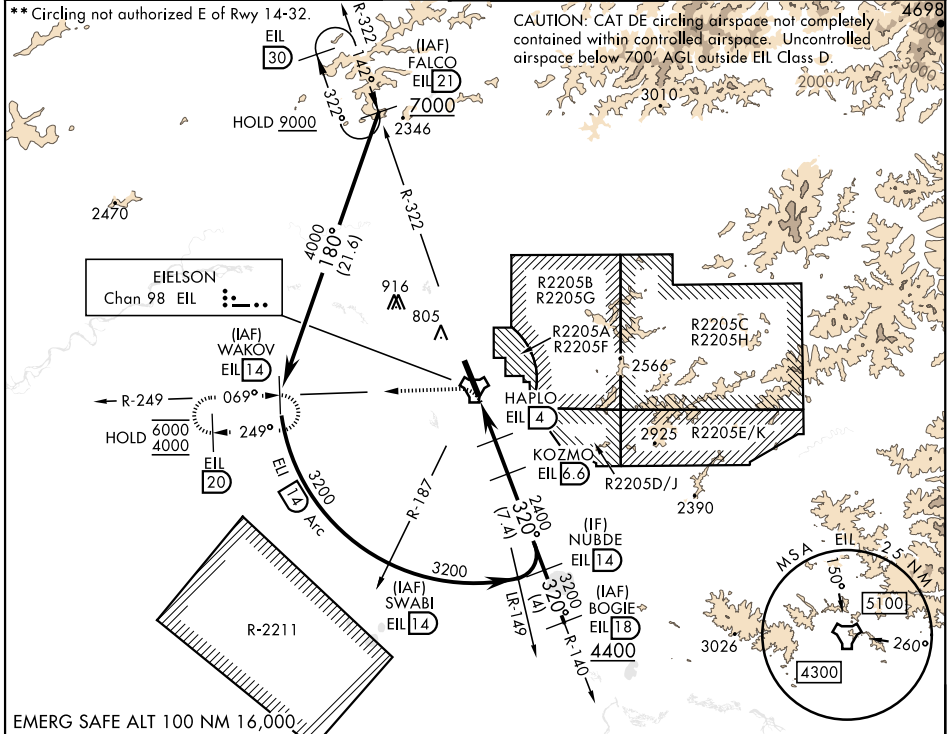


ATIS ★ <b>119.9 273.5</b>	FAIRBANKS APP CON <b>127.1 251.1 360° - 179°</b> <b>125.35 363.2 180° - 359°</b>
------------------------------	--

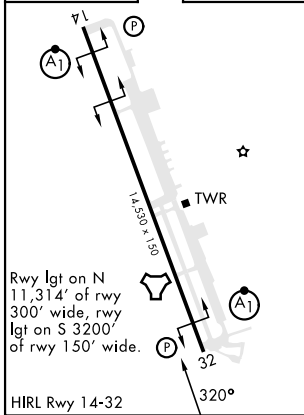
TOWER ★ <b>127.2 352.05</b>
--------------------------------

GND CON <b>121.8 275.8</b>
-------------------------------

CLNC DEL <b>343.7</b>
--------------------------



EMERG SAFE ALT 100 NM 16,000

TACAN Z RWY 32 Profile View
 

ELEV	548	TDZE	548	4000	WAKOV	EIL	14

CATEGORY	A	B	C	D	E
S-32 *	1040/24 492 (500-1/2)		1040/50 492 (500-1)		
**	1040-1 492 (500-1)		1040-1 1/2 492 (500-1 1/2)	1280-2 1/4 732 (800-2 1/4)	1280-2 1/2 732 (800-2 1/2)
☑ CIRCLING					

# TACAN Z RWY 32

AK, 11 JUL 2024 to 05 SEP 2024

AK, 11 JUL 2024 to 05 SEP 2024