

29110

WAPAX FOUR DEPARTURE (WAPAX4•WAPAX) A-1729 (USAF) EIELSON AFB (PAE)

FAIRBANKS, ALASKA

RADAR required

ATIS * 119.9 273.5
CINC DEL 343.7
GND CON 121.8 275.8
TOWER * 127.2 352.05
FAIRBANKS DEP CON 127.1 251.1

Rwy	Knots	60	120	180	240	300	360
14	(0)	(0)	(0)	(0)	(0)	(0)	(0)
34	(0)	(0)	(0)	(0)	(0)	(0)	(0)
V/V	(fpm)	563	1126	1689	2252	2815	3378
V/V	(fpm)	612	1224	1836	2448	3060	3672

ATC Climb Rate

⊙ DER to 14,000 (AXSEM Transition)

⊕ DER to FL220 (APPEL Transition)

⊗ DER to FL200 (CABIN Transition)

CABIN

FL260

FL220

18.9

024°

(31.9)

YUKON 2 MOA (KA)

APPEL

FL260

FL220

YUKON 2 MOA (XA)

116.9

024°

SELEE

FL200

FL180

OYUTO

FL180

YUKON 2 MOA (XB)

034°

RESTO

FL200

FL200

YUKON 2 MOA (XB)

048°

ROLOE

FL200

FL200

AXSEM

FL200

FL200

YUKON 1 MOA (XC)

048°

WAPAX

FL200

FL200

YUKON 1 MOA (XB)

034°

WAPAX

FL200

FL200

YUKON 1 MOA (XB)

048°

WAPAX

FL200

FL200

YUKON 1 MOA (XB)

048°

WAPAX

FL200

FL200

YUKON 1 MOA (XB)

048°

WAPAX

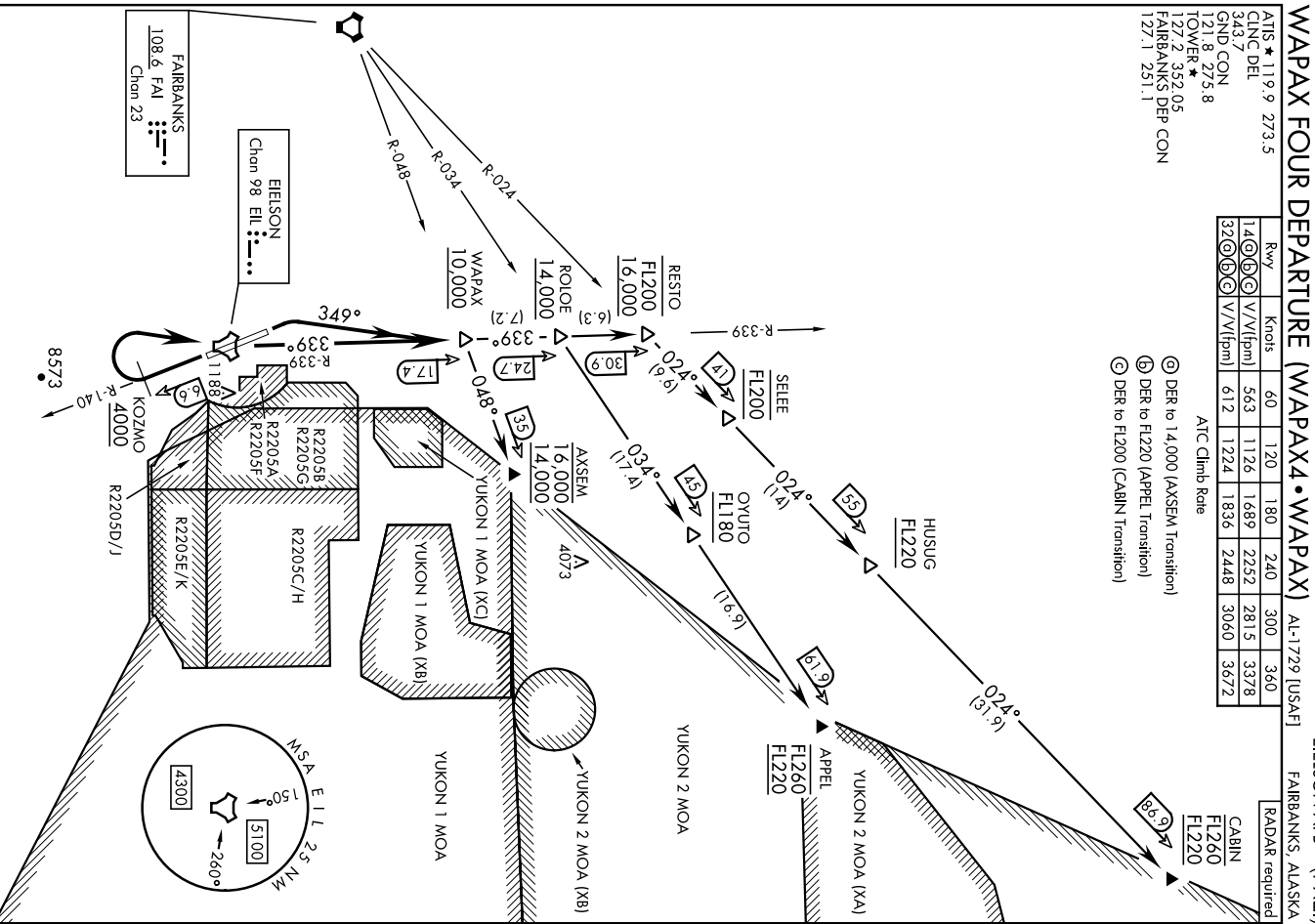
FL200

FL200

YUKON 1 MOA (XB)

048°

WAPAX



AK, 11 JUL 2024 to 05 SEP 2024

(NARRATIVE ON FOLLOWING PAGE)

WAPAX FOUR DEPARTURE (WAPAX4•WAPAX)

FAIRBANKS, ALASKA
EIELSON AFB (PAE)

Orig 20APR23

AK, 11 JUL 2024 to 05 SEP 2024

WAPAX FOUR DEPARTURE (WAPAX4 • WAPAX)EIELSON AFB (PAEI)
FAIRBANKS, ALASKA

AL-1729 [USAF]

DEPARTURE ROUTE DESCRIPTION

TAKEOFF RWY 14: Turn right to intercept EIL TACAN R-140 to KOZMO. Cross KOZMO at or above 4000, then turn right direct EIL to intercept EIL R-339 outbound to WAPAX. Cross WAPAX at or above 10,000. Thence . . .

TAKEOFF RWY 32: Turn right heading 349° to intercept EIL TACAN R-339 to WAPAX. Cross WAPAX at or above 10,000. Thence . . .

APPEL GATE TRANSITION (WAPAX4 • APPEL): Cross ROLOE at or above 14,000. Turn right track outbound on FAI VORTAC R-034 direct OYUTO, direct APPEL. Cross OYUTO at or above FL180, cross APPEL at or above FL220 block FL260.

AXSEM GATE TRANSITION (WAPAX4 • AXSEM): Turn right and track outbound on FAI VORTAC R-048 to AXSEM. Cross AXSEM at or above 14,000 block 16,000.

CABIN GATE TRANSITION (WAPAX4 • CABIN): Cross RESTO at or above 16,000 block FL200. Turn right and track outbound on FAI VORTAC R-024 direct SELEE, direct HUSUG, direct CABIN. Cross SELEE at FL200, cross HUSUG at or above FL220, cross CABIN at or above FL220 block FL260.

WAPAX FOUR DEPARTURE (WAPAX4 • WAPAX)

Orig 20APR23

FAIRBANKS, ALASKA
EIELSON AFB (PAEI)