

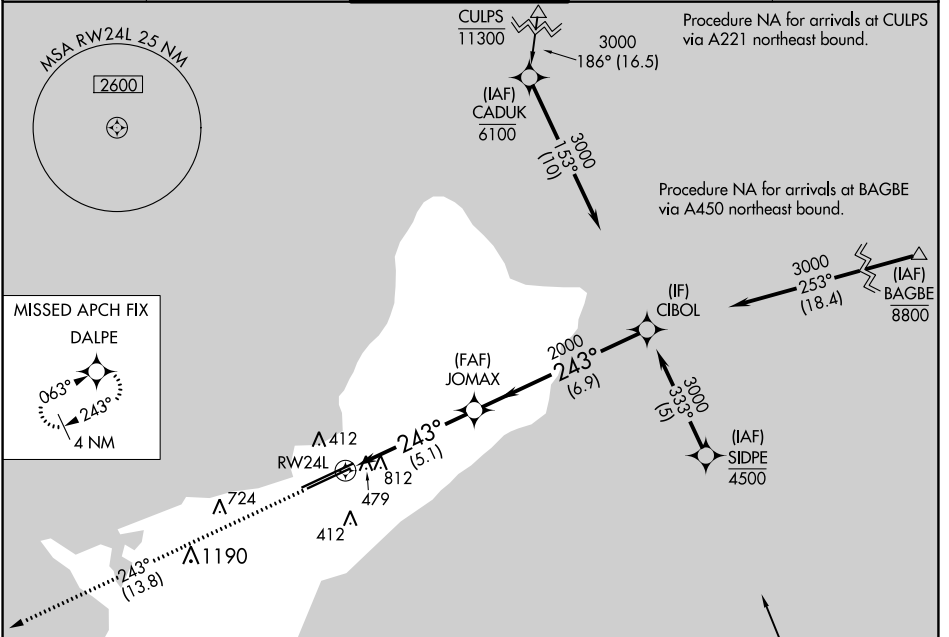
APP CRS 243°	Rwy Idg 8710
	TDZE 293
	Apt Elev 305

RNAV (RNP) Z RWY 24L

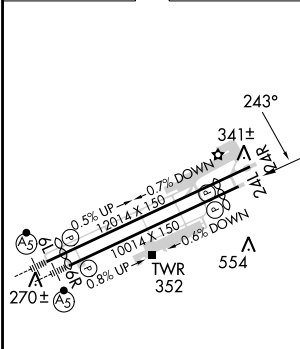
GUAM INTL (GUM)(PGUM)

RNP AR APCH - GPS.	MISSED APPROACH: Climb to 3000 via track 243° to DALPE and hold.
<p>▼ For uncompensated Baro-VNAV systems, procedure NA below 19°C or above 48°C.</p> <p>▲</p>	

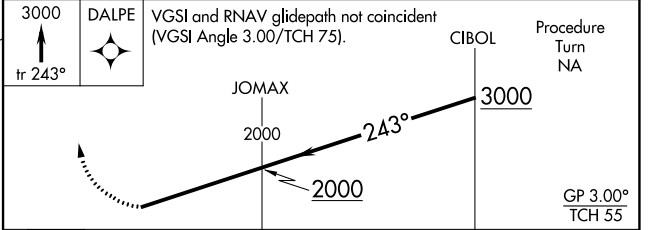
ATIS 119.0	GUAM CERAP 119.8 269.0	AGANA TOWER 118.1 340.2	GND CON 121.9 336.4	CLNC DEL 121.9
----------------------	----------------------------------	-----------------------------------	-------------------------------	--------------------------



ELEV 305	D	TDZE 293
----------	----------	----------



3000	DALPE	VGSI and RNAV glidepath not coincident (VGSI Angle 3.00/TCH 75).	CIBOL	Procedure Turn NA
↑ Tr 243°				



	A	B	C	D
CATEGORY				
RNP 0.20 DA		1103-2½	810 (900-2½)	
RNP 0.30 DA		1140-2½	847 (900-2½)	

AUTHORIZATION REQUIRED

PAC, 11 JUL 2024 to 05 SEP 2024

PAC, 11 JUL 2024 to 05 SEP 2024