

APP CRS	Rwy Idg	10014
063°	TDZE	258
	Apt Elev	305


RNAV (RNP) Z RWY 6R

GUAM INTL (GUM)(PGUM)

RNP AR APCH - GPS.

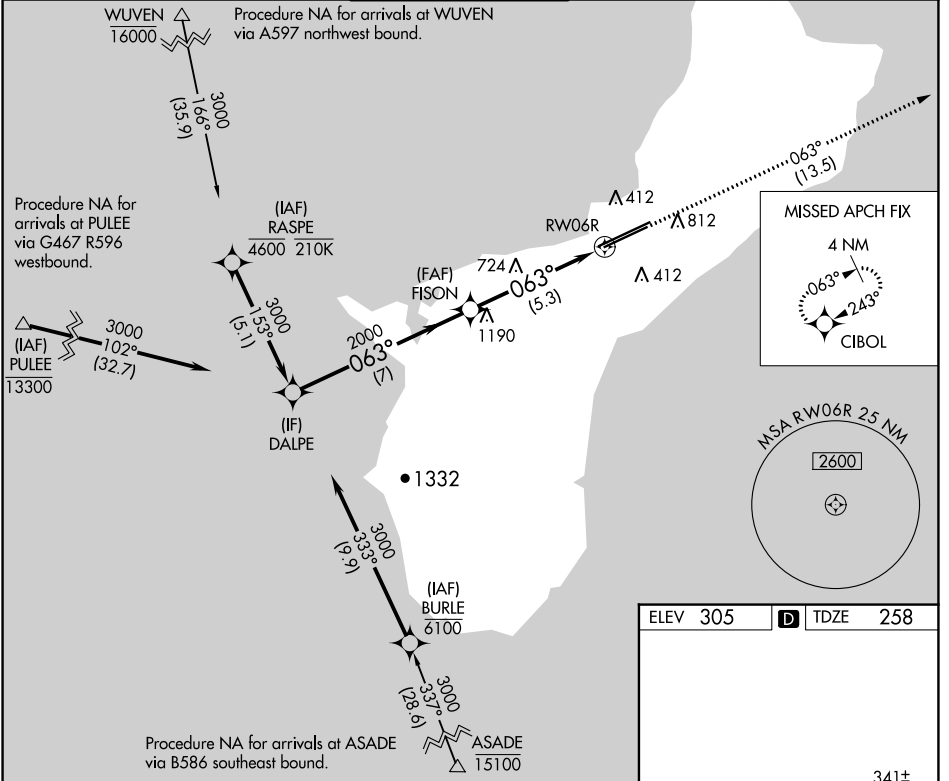
▼ For uncompensated Baro-VNAV systems, procedure NA below 19°C or above 48°C. For inop ALS, increase RNP 0.30 all Cats visibility to 1½ SM. Inop table does not apply to RNP 0.30.*
 *Missed approach requires a minimum climb of 285 feet per NM to 1400.

MALSR



MISSED APPROACH: Climb to 3000 via track 063° to CIBOL and hold.

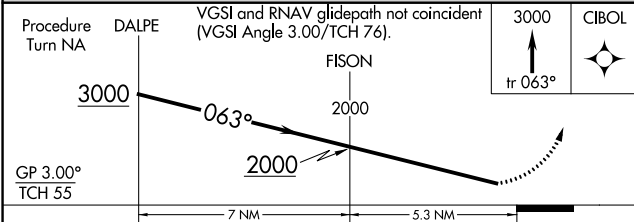
ATIS	GUAM CERAP	AGANA TOWER	GND CON	CLNC DEL
119.0	119.8 269.0	118.1 340.2	121.9 336.4	121.9



PAC, 11 JUL 2024 to 05 SEP 2024

PAC, 11 JUL 2024 to 05 SEP 2024

ELEV 305	D TDZE 258
----------	-------------------



CATEGORY	A	B	C	D
RNP 0.30* DA		511-¾	253 (300-¾)	
RNP 0.30 DA		656-¾	398 (400-¾)	

AUTHORIZATION REQUIRED

