

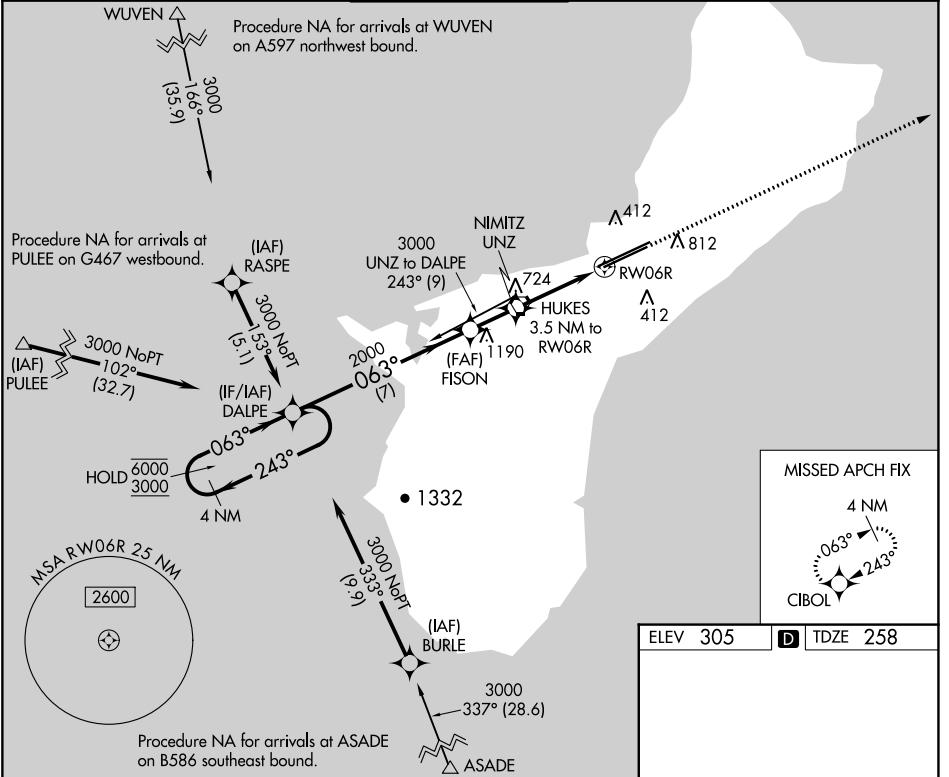
APP CRS	Rwy Idg	10014
063°	TDZE	258
	Apt Elev	305

RNAV (GPS) Y RWY 6R

GUAM INTL (GUM)(PGUM)

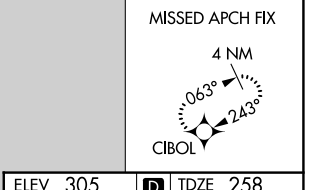
RNP APCH - GPS.			MALSR	MISSED APPROACH: Climb to 3000 direct CIBOL and hold.
<p>▼ Rwy 6R helicopter visibility reduction below 3/4 SM NA. For inop ALS, increase Cat A and B visibility to 1 SM, and Cat C and D to 2 SM. Circling NA southeast of Rwy 6R-24L.</p>				

ATIS	GUAM CERAP	AGANA TOWER	GND CON	CLNC DEL
119.0	119.8 269.0	118.1 340.2	121.9 336.4	121.9

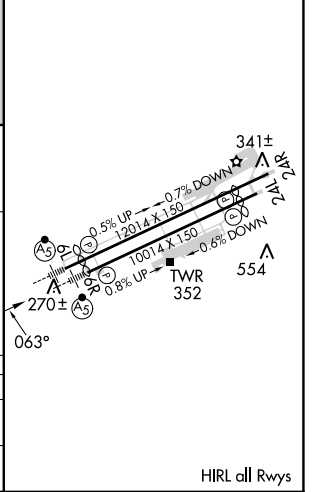
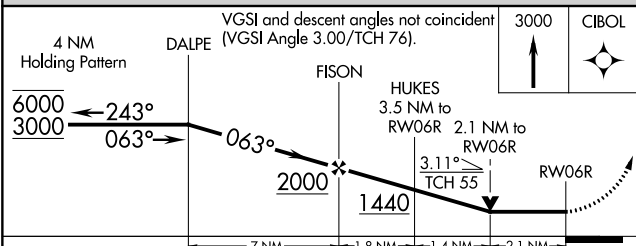


PAC, 11 JUL 2024 to 05 SEP 2024

PAC, 11 JUL 2024 to 05 SEP 2024



ELEV 305	D TDZE 258
----------	-------------------



CATEGORY	A	B	C	D
LNVA MDA	980-3/4	722 (700-3/4)	980-1 5/8	722 (700-1 5/8)
C CIRCLING	980-1	675 (700-1)	980-2 675 (700-2)	NA

HIRL all Rwys