

VORTAC UNZ	APP CRS	Rwy Idg	12014
115.8	242°	TDZE	305
Chan 105		Apt Elev	305

VOR or TACAN RWY 24R

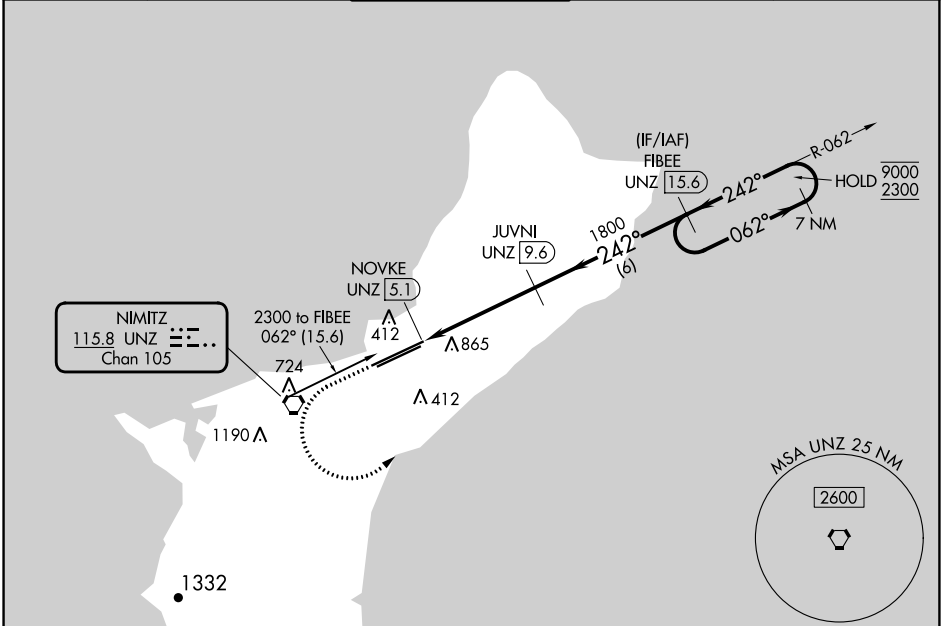
GUAM INTL (GUM)(PGUM)

DME required.

▼ Circling NA southeast of Rwy 6R-24L.
▲ Rwy 24R helicopter visibility reduction below 3/4 SM NA.

MISSED APPROACH: Climb to 2300 then left turn on UNZ VORTAC R-062 to FIBEE/UNZ 15.6 DME and hold.

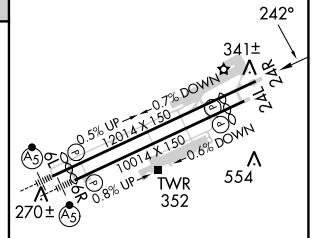
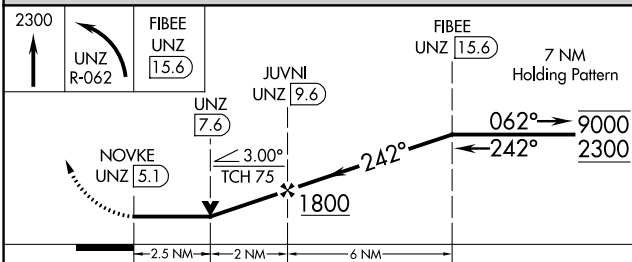
ATIS 119.0	GUAM CERAP 119.8 269.0	AGANA TOWER 118.1 340.2	GND CON 121.9 336.4	CLNC DEL 121.9
----------------------	----------------------------------	-----------------------------------	-------------------------------	--------------------------



PAC, 11 JUL 2024 to 05 SEP 2024

PAC, 11 JUL 2024 to 05 SEP 2024

ELEV 305	D TDZE 305
----------	-------------------



CATEGORY	A	B	C	D
S-24R	1180-1 875 (900-1)	1180-1¼ 875 (900-1¼)	1180-2½	875 (900-2½)
C CIRCLING	1180-1¼	875 (900-1¼)	1180-2½ 875 (900-2½)	NA

HIRL all Rwys