

YIGO, GUAM I, GUAM

# ILS Z or LOC/DME Z RWY 24R

LOC I-YIG <b>109.3</b>	APCH CRS <b>244°</b>	Rwy Ildg <b>10,528</b> TDZE <b>617</b> Arprt Elev <b>617</b>
---------------------------	-------------------------	---

AL-2147 [USAF]

ANDERSEN AFB (PGUA)

**▼** \* When ALS inop, increase RVR to 40, vis to ¾ mile.  
 \*\* When ALS inop, increase RVR to 55, vis to 1 mile.  
 \*\*\* Circling not authorized NW of Rwy 06L-24R.

ALSF-1

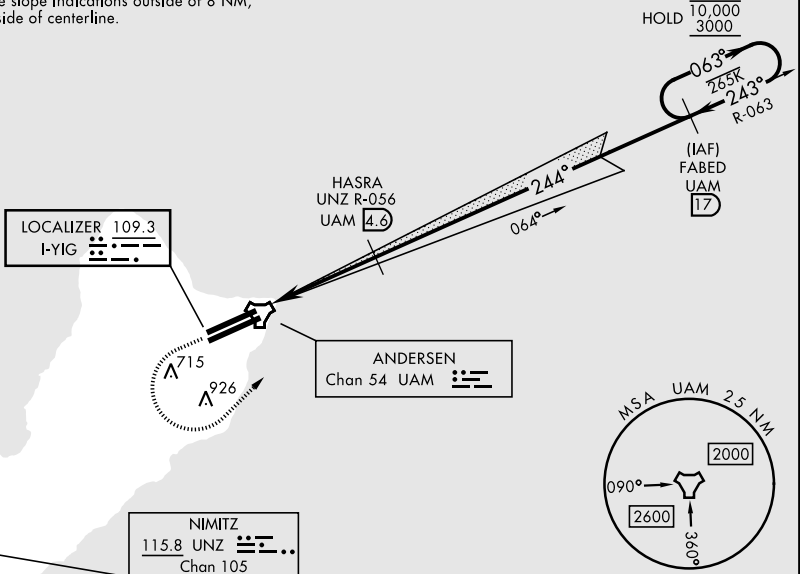
MISSED APPROACH: Climb to 1100, then climbing left turn to 3000 to intercept UAM R-063 direct FABED and hold.

ATIS <b>118.175 254.325</b>	GUAM APP CON <b>119.8 269.0</b>	TOWER <b>126.2 233.7</b>	GND CON <b>121.7 275.8</b>	CLNC DEL <b>126.725 256.7</b>
--------------------------------	------------------------------------	-----------------------------	-------------------------------	----------------------------------

CAUTION: Environmentally Sensitive Area  
 Flights along Andersen cliffline  
 restricted to 1000' AGL or above.

All touchdown zones  
 have a 1.0% down slope.

Disregard all glide slope indications outside of 8 NM,  
 beyond 5° either side of centerline.

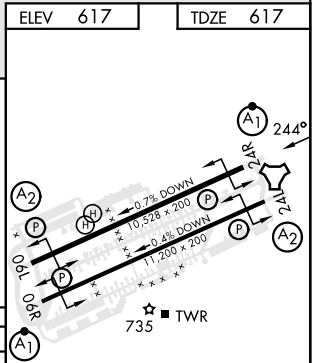
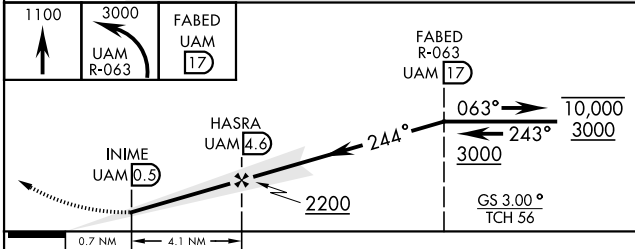


PAC, 11 JUL 2024 to 05 SEP 2024

PAC, 11 JUL 2024 to 05 SEP 2024

ELEV <b>617</b>	TDZE <b>617</b>
-----------------	-----------------

EMERG SAFE ALT 100 NM 2900



CATEGORY	A	B	C	D	E
S-ILS 24R*	817/24 200 (200-½)				
S-LOC 24R**	940/24 323 (400-½)	940/26 323 (400-½)			
CIRCLING ***	1060-1	1080-1	1240-1¾	1240-2	1240-2¼
	443 (500-1)	463 (500-1)	623 (700-1¾)	623 (700-2)	623 (700-2¼)

HIRL all rwys

YIGO, GUAM I, GUAM

13° 35'N-144° 56'E

ANDERSEN AFB (PGUA)

Orig 12AUG21  
TERPS

# ILS Z or LOC/DME Z RWY 24R