

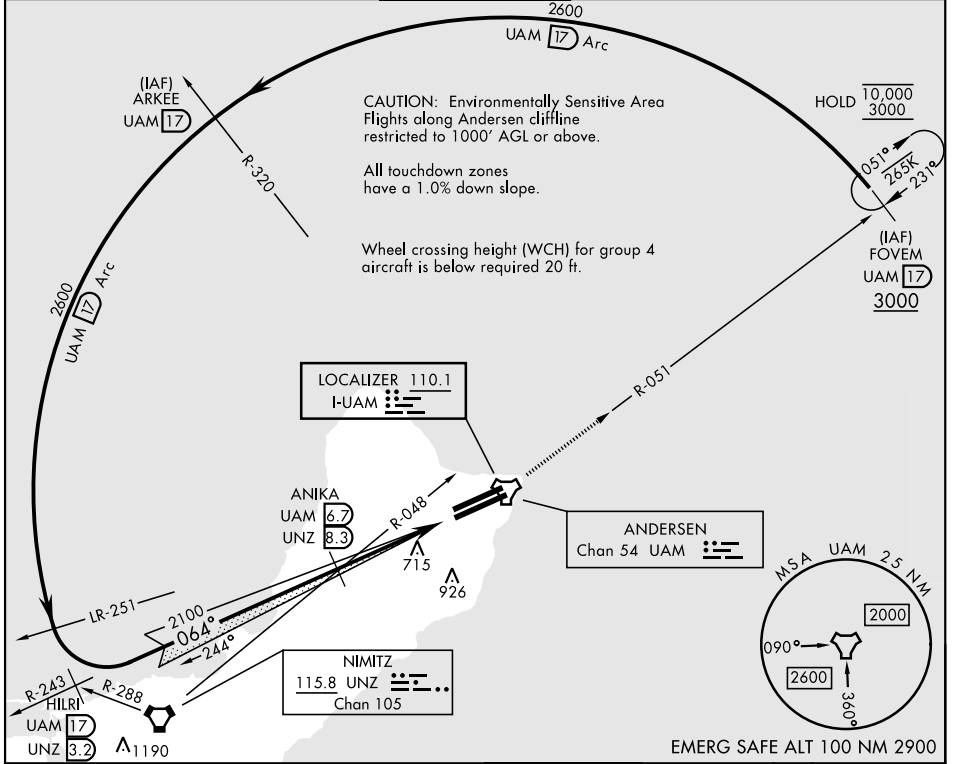
ILS Z or LOC/DME Z RWY 06R

LOC I-UAM 110.1	APCH CRS 064°	Rwy Idg 11,200 TDZE 557 Arprt Elev 617	AL-2147 [USAF]	ANDERSEN AFB (PGUA)
---------------------------	-------------------------	---	----------------	---------------------

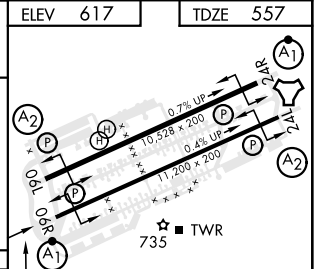
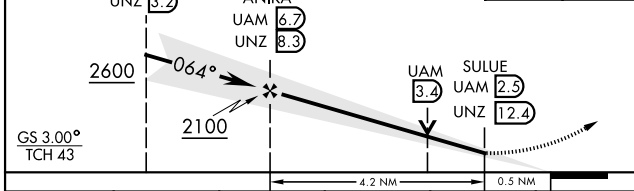
▼ * When ALS inop, increase RVR to 40, vis to 3/4 mile.
 ** When ALS inop, increase CAT AB RVR to 55, vis to 1 mile, CAT CDE vis to 1 1/2 miles.
 *** Circling not authorized NW of Rwy 06L-24R.

ALSF-1 MISSED APPROACH: Climb to 3000, intercept UAM R-051 to FOVM and hold.

ATIS 118.175 254.325	GUAM APP CON 119.8 269.0	TOWER 126.2 233.7	GND CON 121.7 275.8	CLNC DEL 126.725 256.7
--------------------------------	------------------------------------	-----------------------------	-------------------------------	----------------------------------



HILRI UAM 17 UNZ 3.2	ANIKA UAM 6.7 UNZ 8.3	3000 UAM R-051	FOVM UAM 17	ELEV 617	TDZE 557
----------------------	-----------------------	----------------	-------------	----------	----------



CATEGORY	A	B	C	D	E
S-ILS 06R *	757/24		200	(200-1/2)	
S-LOC 06R **	1040/24 483 (500-1/2)		1040/50 483 (500-1)		
*** CIRCLING	1060-1	1080-1	1240-1 3/4	1240-2	1240-2 1/4
	443 (500-1)	463 (500-1)	623 (700-1 3/4)	623 (700-2)	623 (700-2 1/4)
FAF to MAP 4.2 NM					
Knots	60	90	120	150	180
Min:Sec	4:12	2:48	2:06	1:41	1:24

ILS Z or LOC/DME Z RWY 06R

PAC, 11 JUL 2024 to 05 SEP 2024

PAC, 11 JUL 2024 to 05 SEP 2024