

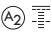
YIGO, GUAM I, GUAM

# RNAV (GPS) RWY 24L

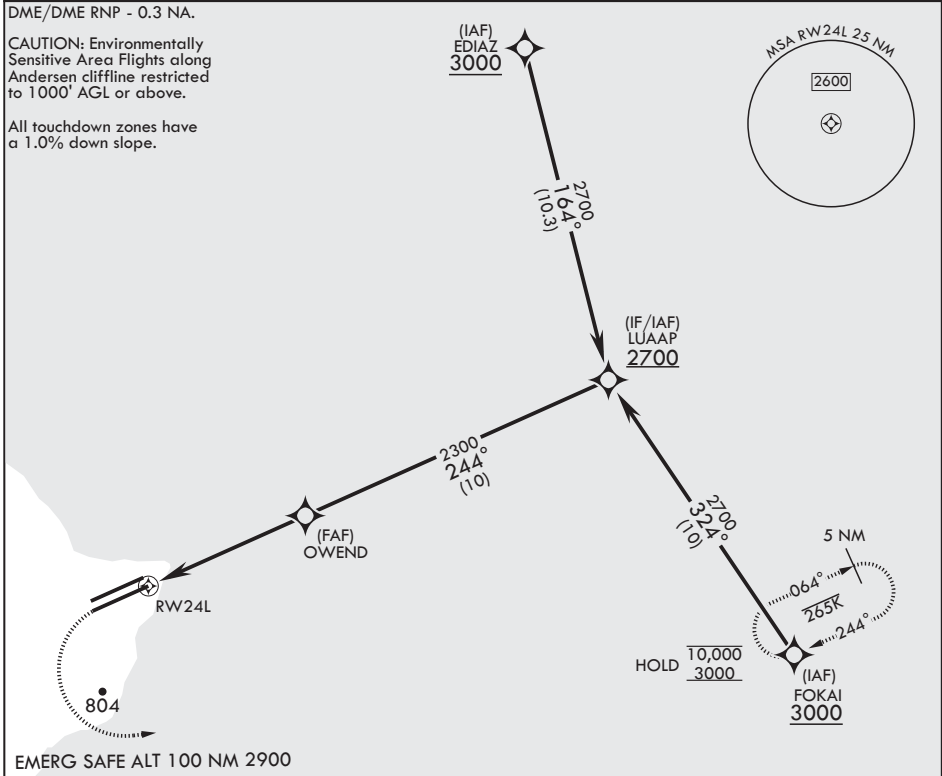
APCH CRS <b>244°</b>	Rwy Idg TDZE Arprt Elev	<b>11,200</b> <b>607</b> <b>617</b>
-------------------------	-------------------------------	---

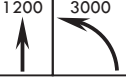

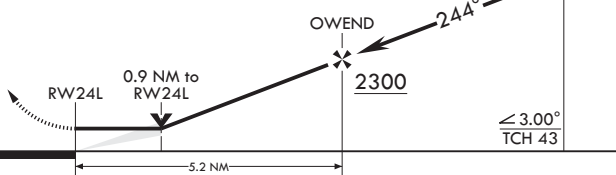
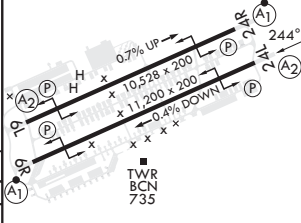
- (USAF)

ANDERSEN AFB (PGUA)

RNP APCH	SALS 	MISSED APPROACH: Climb to 1200, then climbing left turn to 3000 direct FOKAI and hold.
<p><b>▼</b> * When ALS inop, increase CAT AB RVR to 55, vis to 1 mile; CAT CDE RVR to 50, vis to 1 mile. ** Circling not authorized NW of Rwy 06L-24R.</p>		

ATIS <b>118.175 254.325</b>	GUAM APP CON/DEP CON <b>119.8 269.0</b>	TOWER <b>126.2 233.7</b>	GND CON <b>121.7 275.8</b>	CLNC DEL <b>126.725 256.7</b>
--------------------------------	--	-----------------------------	-------------------------------	----------------------------------



 	ELEV 617	TDZE 607			
					
CATEGORY	A	B	C	D	E
LNAV MDA*	940/40	333 (400-¾)	940/45	333	(400-¾)
CIRCLING**	1060-1 443 (500-1)	1080-1 463 (500-1)	1240-1¾ 623 (700-1¾)	1240-2 623 (700-2)	1240-2¼ 623 (700-2¼)
HIRL all Rwys					

YIGO, GUAM I, GUAM

13°35'N - 144°56'E

ANDERSEN AFB (PGUA)

Amdt 1 17JUN21  
TERPS

# RNAV (GPS) RWY 24L

PAC, 11 JUL 2024 to 05 SEP 2024

PAC, 11 JUL 2024 to 05 SEP 2024