

YIGO, GUAM I, GUAM

# RNAV (GPS) RWY 06L

APCH CRS	Rwy Idg	10,528
064°	TDZE	539
	Arprt Elev	617

(USAF)

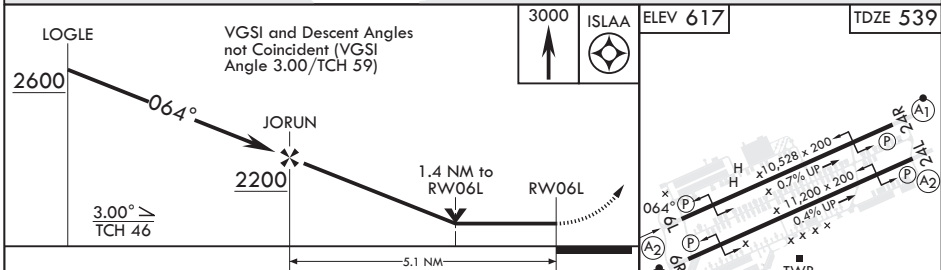
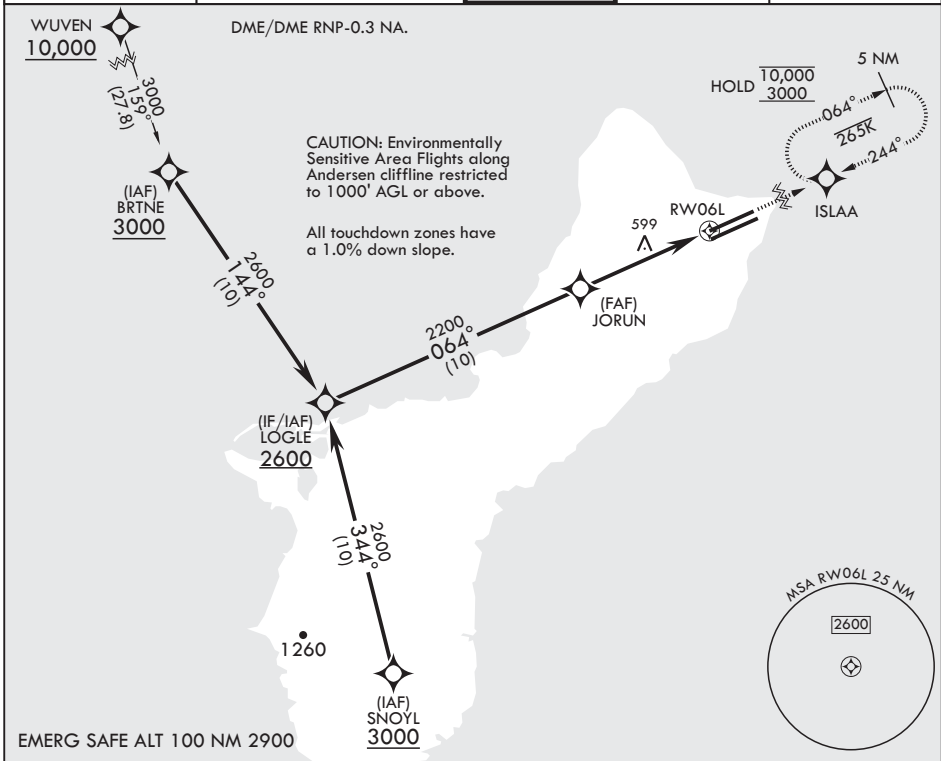
ANDERSEN AFB (PGUA)

RNP APCH

▼ \* When ALS inop increase CAT AB RVR to 55, vis to 1 mile; CAT CDE vis to 1 3/8 miles.  
 \*\* Circling not authorized NW of Rwy 06L-24R.  
 Circling not authorized to Rwys 06L and 24R.

SALS MISSED APPROACH: Climb to 3000 direct ISLAA and hold.

ATIS 118.175 254.325	GUAM APP CON/DEP CON 119.8 269.0	TOWER 126.2 233.7	GND CON 121.7 275.8	CLNC DEL 126.725 256.7
-------------------------	-------------------------------------	----------------------	------------------------	---------------------------



CATEGORY	A	B	C	D	E
LNVAI MDA*	1040/40 501 (500-3/4)	1040-1 1/4 501 (500-1 1/4)	1040-1 1/4 501 (500-1 1/4)	1240-2 623 (700-2)	1240-2 1/4 623 (700-2 1/4)
CIRCLING**	1060-1 443 (500-1)	1080-1 463 (500-1)	1240-1 3/4 623 (700-1 3/4)	1240-2 623 (700-2)	1240-2 1/4 623 (700-2 1/4)

HIRL all Rwys

YIGO, GUAM I, GUAM 13°35'N - 144°56'E ANDERSEN AFB (PGUA)

Amdt 1 17JUN21  
TERPS

# RNAV (GPS) RWY 06L

PAC, 11 JUL 2024 to 05 SEP 2024

PAC, 11 JUL 2024 to 05 SEP 2024