

YIGO, GUAM I, GUAM

RNAV (GPS) RWY 06R

| | | |
|----------|------------|--------|
| APCH CRS | Rwy Idg | 11,200 |
| 064° | TDZE | 557 |
| | Arprt Elev | 617 |

- (USAF)

ANDERSEN AFB (PGUA)

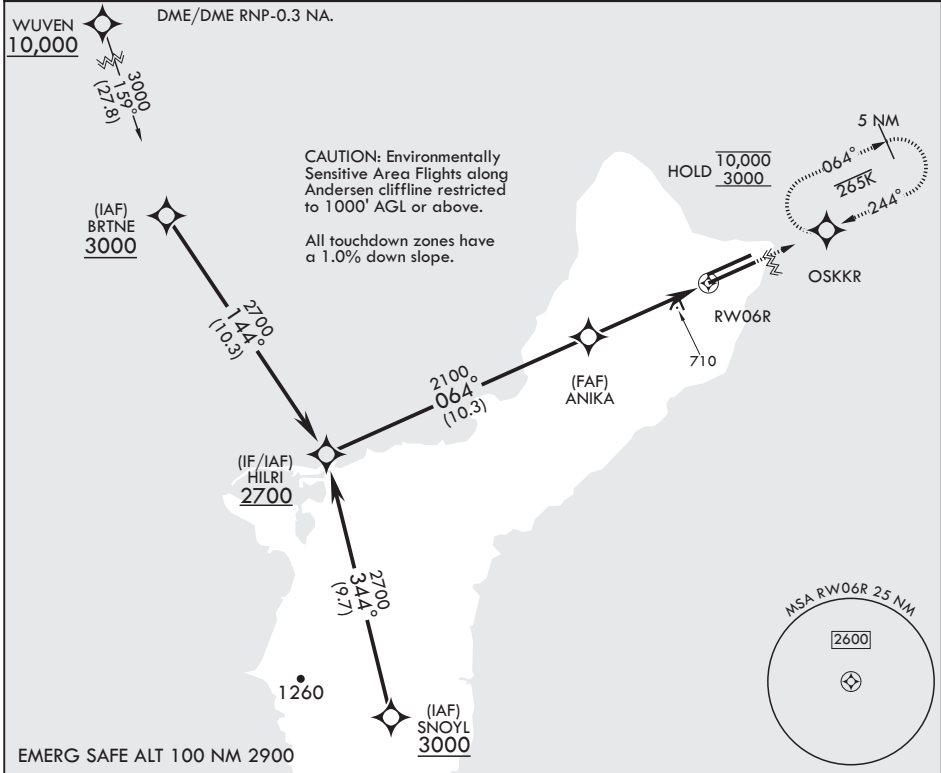
RNP APCH



MISSED APPROACH: Climb to 3000 direct OSKKR and hold.

▼ * When ALS inop, increase CAT AB RVR to 55, vis to 1 mile; CAT CDE vis to 1 3/8 miles.
 ** Circling not authorized NW of Rwy 6L-24R.

| | | | | |
|-----------------|----------------------|-------------|-------------|---------------|
| ATIS | GUAM APP CON/DEP CON | TOWER | GND CON | CLNC DEL |
| 118.175 254.325 | 119.8 269.0 | 126.2 233.7 | 121.7 275.8 | 126.725 256.7 |



| | | | | | |
|--------------|---------------------|--------------------|----------------------|--------------------|----------------------|
| HILRI | 2700 | OSKKR | ELEV 617 | TDZE 557 | |
| 2700 | | 3000 | | | |
| 064° | | OSKKR | | | |
| 3.00° TCH 44 | | ANIK A | | | |
| 2100 | | 1.4 NM to RW06R | | | |
| 4.7 NM | | RW06R | | | |
| CATEGORY | A | B | C | D | E |
| LNAV MDA* | 1040/24 483 (500-½) | | 1040/50 483 (500-1) | | |
| CIRCLING** | 1060-1 443 (500-1) | 1080-1 463 (500-1) | 1240-1¾ 623 (700-1¾) | 1240-2 623 (700-2) | 1240-2¼ 623 (700-2¼) |

HILRI all Rwys

YIGO, GUAM I, GUAM

13°35'N - 144°56'E

ANDERSEN AFB (PGUA)

Amdt 1 17JUN21 TERPS

RNAV (GPS) RWY 06R

PAC, 11 JUL 2024 to 05 SEP 2024

PAC, 11 JUL 2024 to 05 SEP 2024