

YIGO, GUAM I, GUAM

# TACAN Z RWY 24L

TACAN UAM Chan 54	APCH CRS 256°	Rwy Idg TDZE Arprt Elev	11,200 607 617
----------------------	------------------	-------------------------------	----------------------

-(USAF)

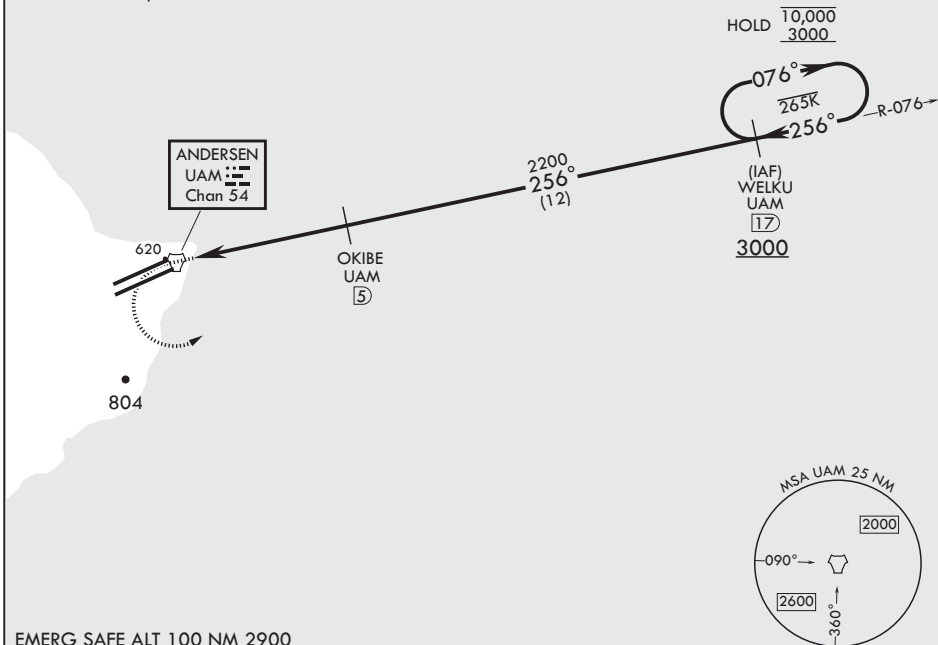
ANDERSEN AFB (PGUA)

RADAR or DME required.		SALS	MISSED APPROACH: Climb to 1100, then climbing left turn to 3000 to intercept UAM R-076 to WELKU and hold.
<p>▼ * When ALS inop, increase CAT AB RVR to 55, vis to 1 mile; CAT CDE RVR to 50, vis to 1 mile. ** Circling not authorized NW of Rwy 6L-24R.</p>		(A2)	

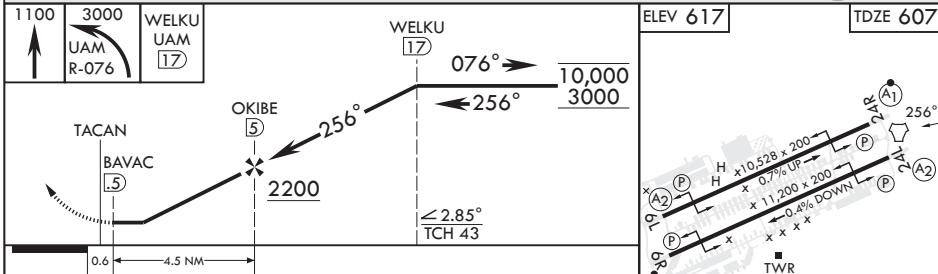
ATIS 118.175 254.325	GUAM APP CON/DEP CON 119.8 269.0	TOWER 126.2 233.7	GND CON 121.7 275.8	CLNC DEL 126.725 256.7
-------------------------	-------------------------------------	----------------------	------------------------	---------------------------

CAUTION: Environmentally Sensitive Area Flights along Andersen cliff line restricted to 1000' AGL or above.

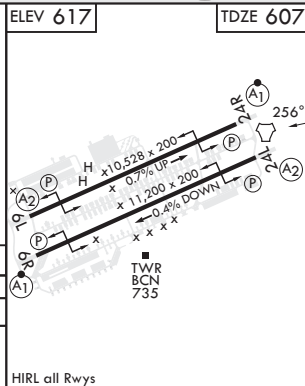
All touchdown zones have a 1.0% down slope.



EMERG SAFE ALT 100 NM 2900



CATEGORY	A	B	C	D	E
S-24L*	940/40 333 (400-¾)	940/45 333 (400-¾)	1240-1¾ 623 (700-1¾)	1240-2 623 (700-2)	1240-2¼ 623 (700-2¼)
☐ CIRCLING**	1060-1 443 (500-1)	1080-1 463 (500-1)	1240-1¾ 623 (700-1¾)	1240-2 623 (700-2)	1240-2¼ 623 (700-2¼)



YIGO, GUAM I, GUAM

13°35'N - 144°56'E

ANDERSEN AFB (PGUA)

Amdt 2 17JUN21  
TERPS

# TACAN Z RWY 24L

PAC, 11 JUL 2024 to 05 SEP 2024

PAC, 11 JUL 2024 to 05 SEP 2024