

YIGO, GUAM I, GUAM

TACAN Z RWY 06L

TACAN UAM Chan 54	APCH CRS 065°	Rwy Idg 10,528	TDZE 539	Arprt Elev 617
----------------------	------------------	-------------------	-------------	-------------------

-(USAF)

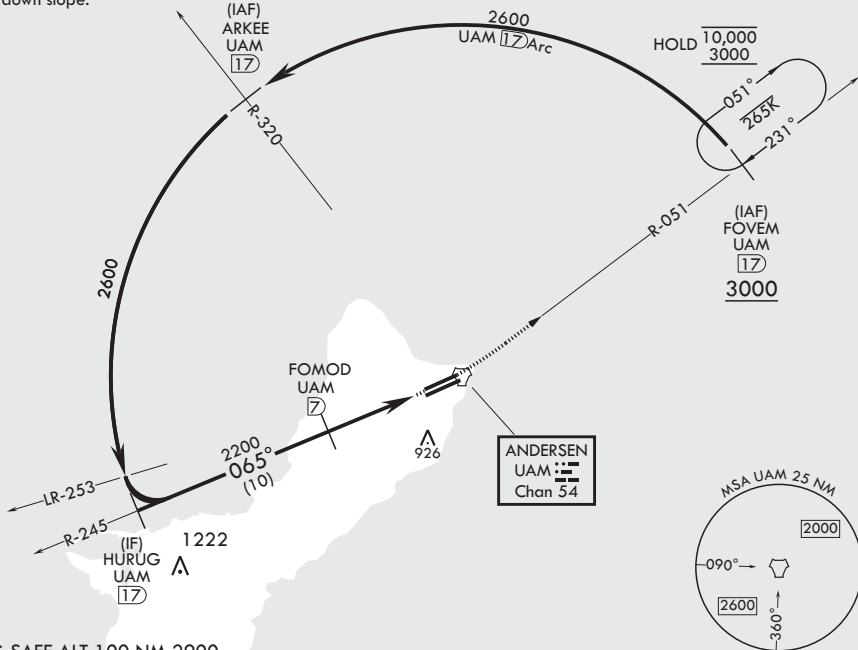
ANDERSEN AFB (PGUA)

RADAR or DME required.	SALS	MISSED APPROACH: Climb to 3000, intercept UAM R-051 to FOVEM and hold.
▼ * When ALS inop, increase CAT AB RVR to 55, vis to 1 mile, CAT CDE vis 1 3/8 miles. ** Circling not authorized NW of Rwy 06L-24R.		

ATIS 118.175 254.325	GUAM APP CON/DEP CON 119.8 269.0	TOWER 126.2 233.7	GND CON 121.7 275.8	CLNC DEL 126.725 256.7
-------------------------	-------------------------------------	----------------------	------------------------	---------------------------

CAUTION: Environmentally Sensitive Area. Flights along Andersen cliffline restricted to 1000' AGL or above

All touchdown zones have a 1.0% down slope.



EMERG SAFE ALT 100 NM 2900

HURUG UAM 17	2600	065°	FOMOD UAM 7	2200	3.3	ITUME UAM 2.5	TACAN	3000 UAM R-051	FOVEM UAM 17	ELEV 617	TDZE 539
		2.97° TCH 60		4.5 NM		0.6					
CATEGORY	A	B	C	D	E						
S-6L*	1040/40	501 (500-3/4)	1040-1 1/4	501	(500-1 1/4)						
C CIRCLING**	1060-1 443 (500-1)	1080-1 463 (500-1)	1240-1 3/4 623 (700-1 3/4)	1240-2 623 (700-2)	1240-2 1/4 623 (700-2 1/4)	HIRL all Rwys					

YIGO, GUAM I, GUAM

13°35'N - 144°56'E

ANDERSEN AFB (PGUA)

Amdt 3 30NOV23
TERPS

TACAN Z RWY 06L

PAC, 11 JUL 2024 to 05 SEP 2024

PAC, 11 JUL 2024 to 05 SEP 2024