

YIGO, GUAM I, GUAM

# TACAN Z RWY 06R

TACAN UAM Chan 54	APCH CRS 060°	Rwy Idg TDZE Arprt Elev	11,200 557 617
----------------------	------------------	-------------------------------	----------------------

-(USAF)

ANDERSEN AFB (PGUA)

RADAR or DME required.

▼ \* When ALS inop, increase CAT AB RVR to 55, vis to 1 mile, CAT CDE vis to 1 3/8 miles.  
\*\* Circling not authorized NW of Rwy 06L-24R.

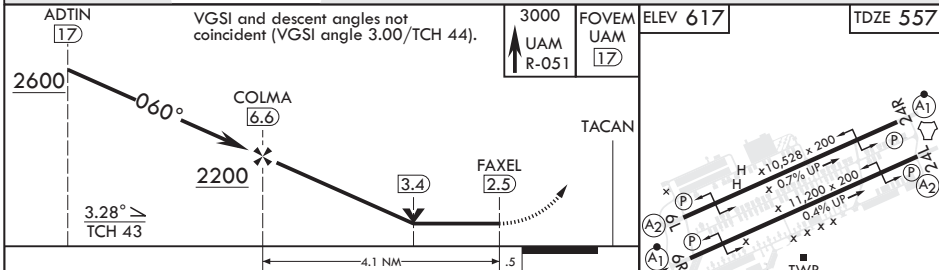
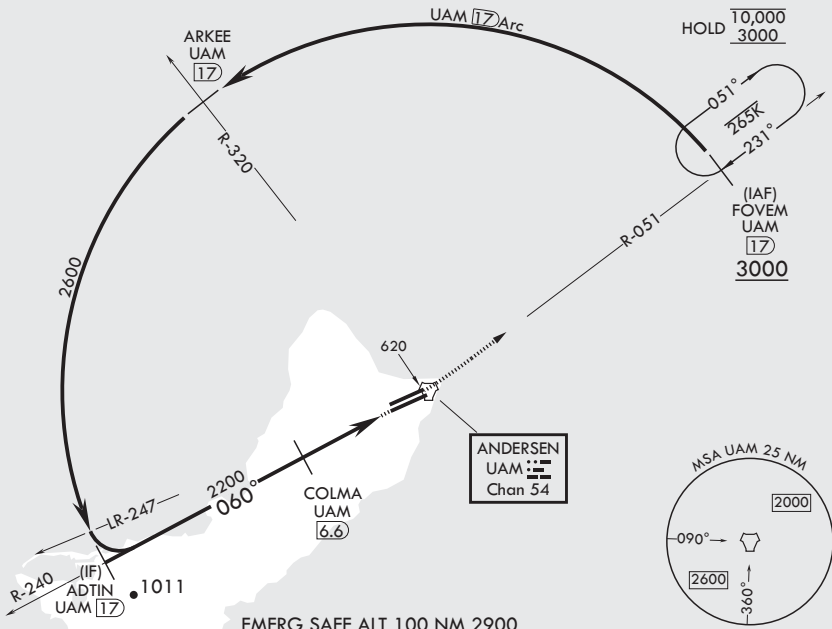


MISSED APPROACH: Climb to 3000, intercept UAM R-051 to FOVEM and hold.

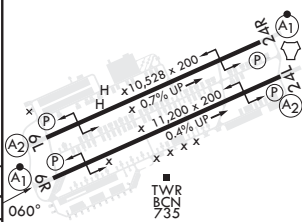
ATIS 118.175 254.325	GUAM APP CON/DEP CON 119.8 269.0	TOWER 126.2 233.7	GND CON 121.7 275.8	CLNC DEL 126.725 256.7
-------------------------	-------------------------------------	----------------------	------------------------	---------------------------

CAUTION: Environmentally sensitive area flights along Andersen cliff line restricted to 1000' AGL or above.

All touchdown zones have a 1.0% down slope.



CATEGORY	A	B	C	D	E
S-6R*	1040/24 483 (500-½)		1040/50 483 (500-1)		
☐ CIRCLING**	1060-1 443 (500-1)	1080-1 463 (500-1)	1240-1¼ 623 (700-1¼)	1240-2 623 (700-2)	1240-2¼ 623 (700-2¼)



YIGO, GUAM I, GUAM

13°35'N - 144°56'E

ANDERSEN AFB (PGUA)

Amdt 2 17JUN21  
TERPS

# TACAN Z RWY 06R

PAC, 11 JUL 2024 to 05 SEP 2024

PAC, 11 JUL 2024 to 05 SEP 2024