

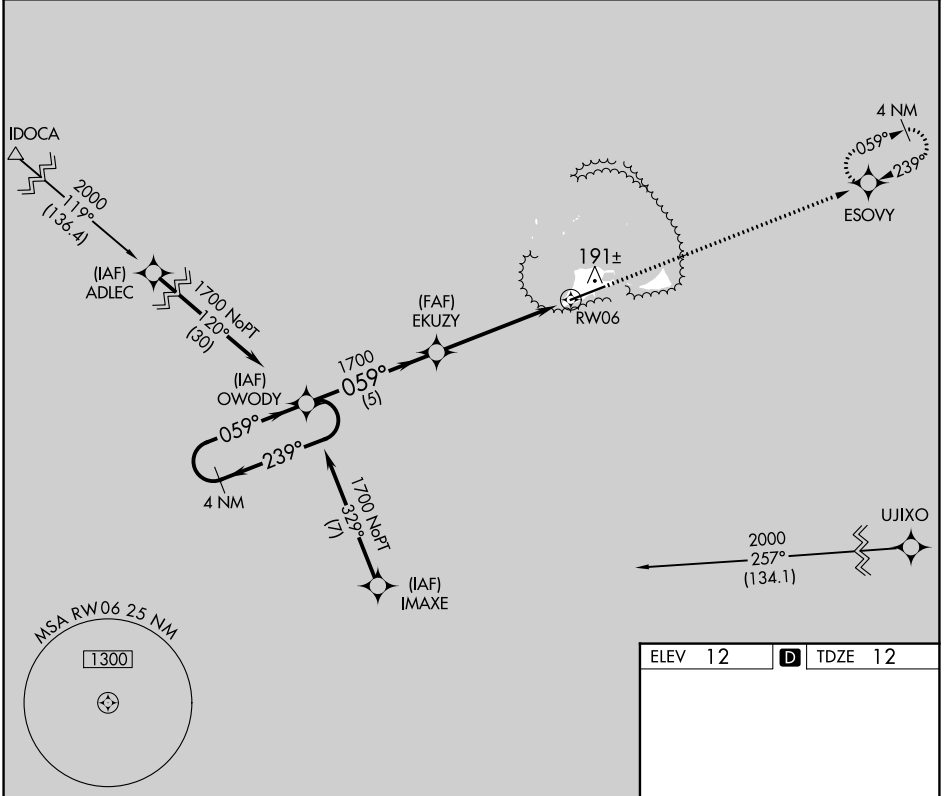
APP CRS	Rwy Idg	<b>7800</b>
<b>059°</b>	TDZE	<b>12</b>
	Apt Elev	<b>12</b>

# RNAV (GPS) RWY 6

HENDERSON FLD (MDY) (PMDY)

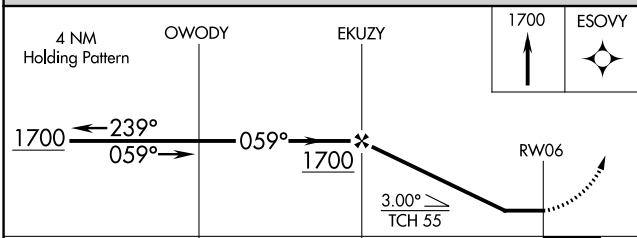
RNP APCH.	MISSED APPROACH: Climb to 1700 direct ESOVY WP and hold.
<b>⚠</b> No controlled airspace below 5500. When local altimeter setting not received procedure NA. Rwy 6 helicopter visibility reduction below 3/4 SM NA.	

AWOS-3P <b>118.325</b>	MIDWAY RADIO <b>126.2 257.8</b>	CTAF <b>122.9</b>
---------------------------	------------------------------------	----------------------



PAC, 11 JUL 2024 to 05 SEP 2024

PAC, 11 JUL 2024 to 05 SEP 2024



ELEV 12	<b>D</b> TDZE 12
---------	------------------

The obstacle diagram shows various terrain features and obstructions. Key elevations include 177±, 172±, 184±, 169±, 191±, 167±, and 55±. The runway length is 7800 x 150. The approach is 059° to RWY 6.

MIRL Rwy 6-24  
REIL Rws 6 and 24

CATEGORY	A	B	C	D
LNVA MDA	460-1 448 (500-1)		460-1 <sup>3</sup> / <sub>8</sub> 448 (500-1 <sup>3</sup> / <sub>8</sub> )	460-1 <sup>1</sup> / <sub>2</sub> 448 (500-1 <sup>1</sup> / <sub>2</sub> )
CIRCLING	520-1 508 (600-1)		520-1 <sup>1</sup> / <sub>2</sub> 508 (600-1 <sup>1</sup> / <sub>2</sub> )	580-2 568 (600-2)