

WAKE ISLAND, WAKE ISLAND

# RNAV (GPS) RWY 10

APCH CRS **096°**  
 Rwy Idg **9844**  
 TDZE **23**  
 Arprt Elev **23**

- (USAF)

WAKE ISLAND AFLD (PWAJ)

RNP APCH-GPS

MISSED APPROACH: Climbing to 4000 direct NONEY and hold. Continue climb-in-hold to 4000.

✘ \* Circling not authorized N of Rwy 10-28.

WAKE OPS  
**128.0 349.4**

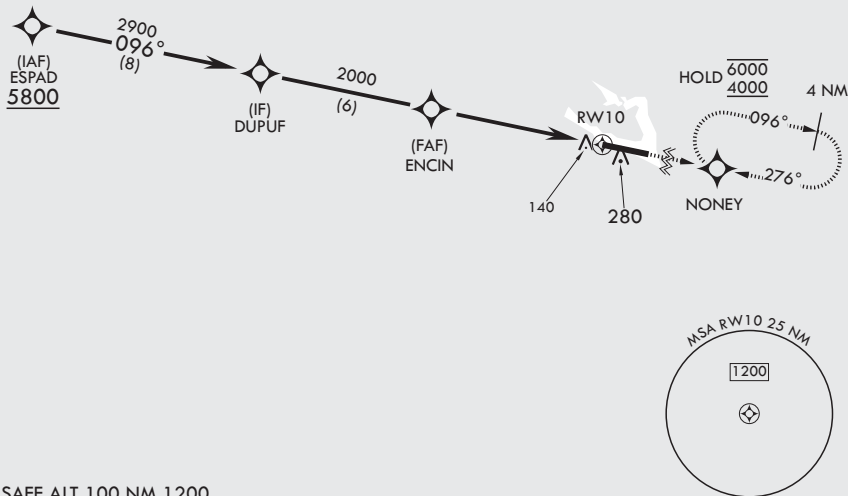
CAUTION: Procedure in uncontrolled airspace. Uncontrolled airspace below 5500' AGL.

Contact Wake Island Operations for advisory services.

CAUTION: When circling to Rwy 28 at night, operational VGSI required, remain on or above VGSI glidepath until threshold.

When VGSI inop, procedure not authorized at night.

USAF only: when VGSI inop, straight-in Rwy 10 authorized at night with MAJCOM A3 approval.



EMERG SAFE ALT 100 NM 1200

DUPUF	VGSI and descent angles not coincident (VGSI angle 3.00/TCH 76).		TA 5500	4000	NONEY	ELEV 23	TDZE 23
2900	096°	ENCIN	2000	1.1 NM to RW10	RW10	38	BCN 65
3.01° TCH 60				6 NM		98.44 x 150	69 30 28
CATEGORY	A	B	C	D	E		
LNAV MDA	460-1	437 (500-1)	460-1½	437	(500-1½)		
<b>C</b> CIRCLING*	460-1 437 (500-1)	480-1 457 (500-1)	480-1½ 457 (500-1½)	580-2	557 (600-2)	HIRL all Rwys REIL all Rwys	

WAKE ISLAND, WAKE ISLAND

19°17'N - 166°38'E

WAKE ISLAND AFLD (PWAJ)

Amdt 3 18APR24  
 TERPS

# RNAV (GPS) RWY 10

PAC, 11 JUL 2024 to 05 SEP 2024

PAC, 11 JUL 2024 to 05 SEP 2024