

WAKE ISLAND, WAKE ISLAND

VOR/DME or TACAN RWY 28

| | | | |
|--|-------------------------|------------------------------|---------------------------------------|
| VORTAC AWK 113.5 Chan 82 | APCH CRS 280° | Rwy Idg TDZE Arpt Elev | 9844 20 23 |
|--|-------------------------|------------------------------|---------------------------------------|

[USAF]

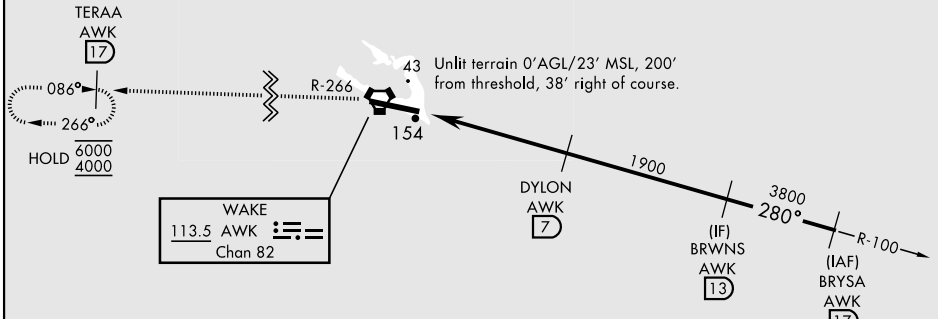
WAKE ISLAND AFLD (PWAK)

RNAV or RADAR required

▼ * Circling not authorized N of Rwy 10-28.
Rwy 28 helicopter visibility reduction below 1 SM not authorized.

MISSED APPROACH: Climbing to 4000 on AWK VORTAC R-266 direct TERAA and hold.

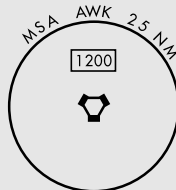
CONTACT WAKE ISLAND OPERATIONS FOR ADVISORY SERVICES
128.0 349.4



Straight-in Rwy 28 at night, operational VGSI required, remain on or above VGSI glidepath until threshold.
USAF Only: When VGSI inop, straight-in Rwy 28 authorized at night with aircrew command approval.

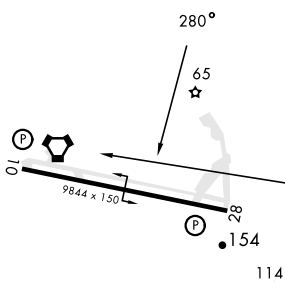
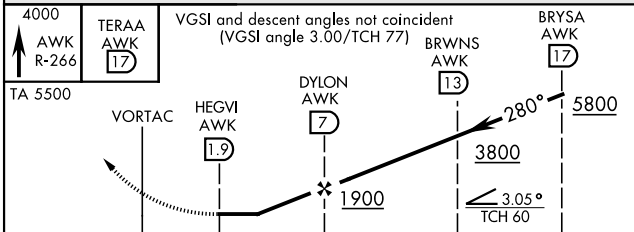
CAUTION: When Rwy 10 VGSI inop, circling to Rwy 10 not authorized at night.

CAUTION: Procedure in uncontrolled airspace. Uncontrolled airspace below 5500' AGL.



| | |
|---------|---------|
| ELEV 23 | TDZE 20 |
|---------|---------|

EMERG SAFE ALT 100 NM 1200



| CATEGORY | A | B | C | D | E |
|--------------------|----------------------|----------------------|------------------------|----------------------|---|
| S-28 | 460-1 | 440 (500-1) | 460-1½ | 440 (500-1½) | |
| ☐ CIRCLING* | 460-1 437 (500-1) | 480-1 457 (500-1) | 480-1½ 457 (500-1½) | 580-2 557 (600-2) | |

HIRL Rwy 10-28
REIL Rwy 10-28

WAKE ISLAND, WAKE ISLAND

19° 17' N-166° 38' E

WAKE ISLAND AFLD (PWAK)

Orig 18APR24
TERPS

VOR/DME or TACAN RWY 28

PAC, 11 JUL 2024 to 05 SEP 2024

PAC, 11 JUL 2024 to 05 SEP 2024