

APP CRS	Rwy Idg	<b>4500</b>
<b>234°</b>	TDZE	<b>24</b>
	Apt Elev	<b>29</b>

# RNAV (GPS) RWY 23

POINT LAY LRRS (PIZ)(PPIZ)

**33** -33°C  
 DME/DME RNP- 0.3 NA. When local altimeter setting not received, procedure NA.

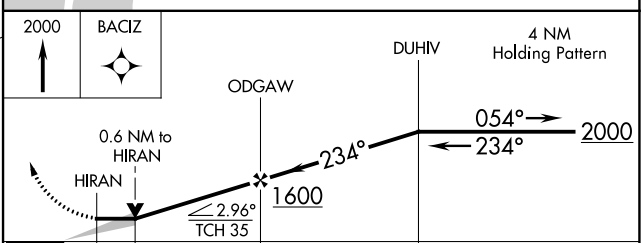
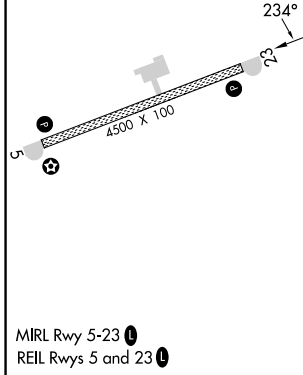
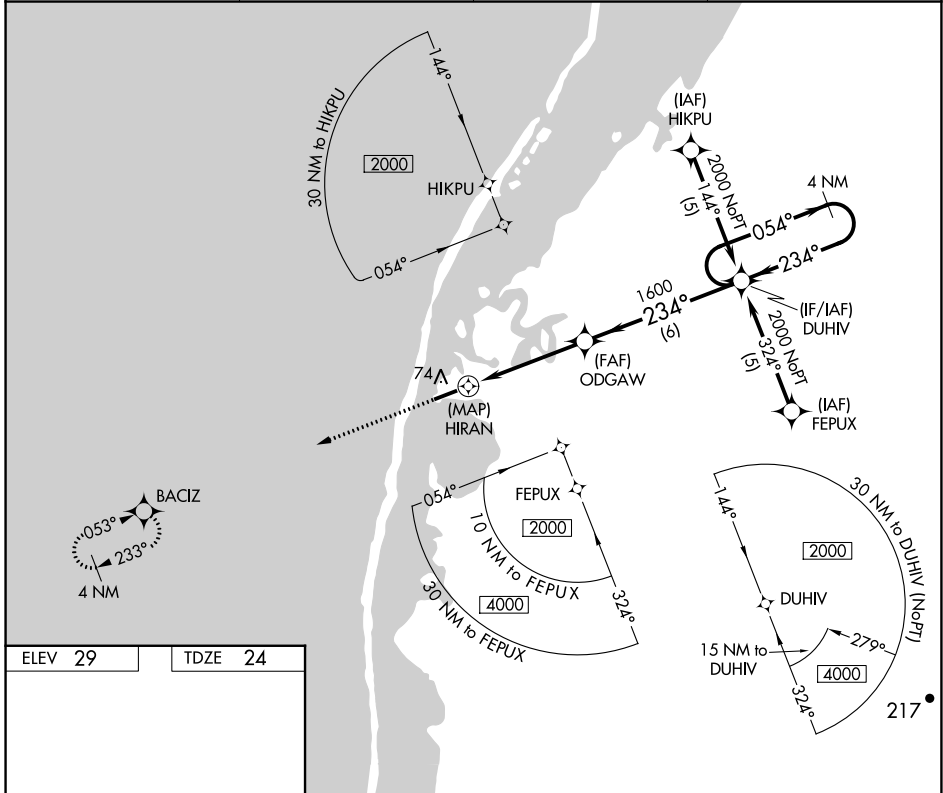
MISSED APPROACH: Climb to 2000 direct BACIZ and hold.

AWOS-3P  
**135.65**

ANCHORAGE CENTER  
**119.65 363.25**

BARROW RADIO  
**122.4**

CTAF  
**122.8**



CATEGORY	A	B	C	D
LNAV MDA	400-1 376 (400-1)			NA
CIRCLING	440-1 411 (500-1)	480-1 451 (500-1)	480-1½ 451 (500-1½)	NA

AK, 11 JUL 2024 to 05 SEP 2024

AK, 11 JUL 2024 to 05 SEP 2024