

HONPO TWO DEPARTURE (OBSTACLE) (RNAV) (HONPO2•JIPAK)

TIN CITY, ALASKA

UNICOM (CTAF)

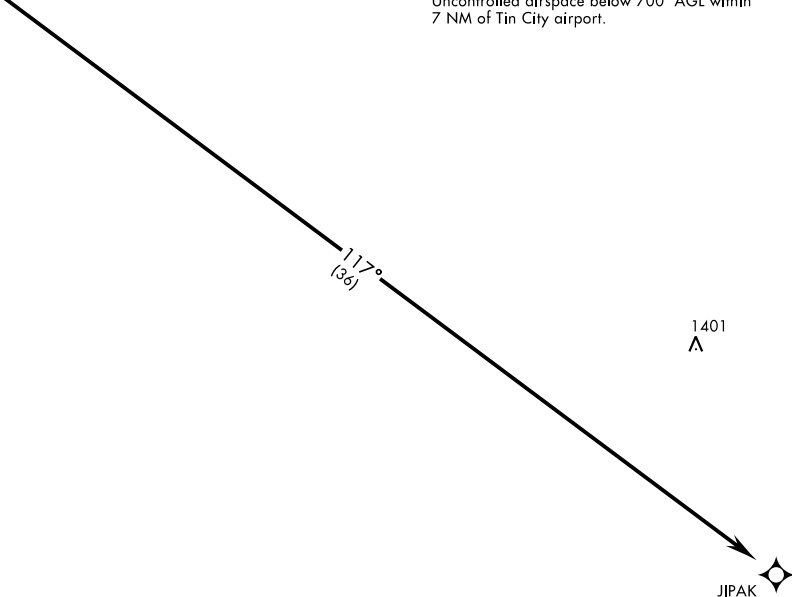
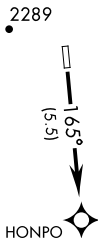
AL-2334 [USAF]

126.2
TIN CITY RCO (NOME RADIO)
122.6
ANCHORAGE CENTER
133.3 290.4

MILITARY CERTIFIED
AIRCREWS OR AUTHORIZED
CONTRACT AIRCRAFT ONLY

NOT FOR CIVIL USE

RNAV 1
DME/DME RNP - 0.3 NA
Night operations not authorized
CAUTION: 2289' mountain 2 NM west of airport.
Uncontrolled airspace below 700' AGL within
7 NM of Tin City airport.



GPS REQUIRED

DEPARTURE ROUTE DESCRIPTION

TAKE-OFF RWY 16: Climb to 7000 direct HONPO, then climbing left turn, track 117° to JIPAK.

TAKE-OFF RWY 34: NA