

# NDB RWY 24

NDB/DME UTO <b>272</b> Chan <b>22 (Y)</b>	APCH CRS <b>252°</b>	Rwy ldg TDZE <b>1161</b> Arprt Elev <b>1261</b>	AL-2335 [USAF]	INDIAN MOUNTAIN LRRS (PAIM)
---	-------------------------	---	----------------	-----------------------------

<p><b>▼</b> Night operations not authorized.</p>	<p>MISSED APPROACH: Climb to 5000, then climbing left turn to 6600 direct UTO NDB and hold. Continue climb climb-in-hold to 6600.</p>
--	---

ANCHORAGE CENTER APP/DEP CON <b>124.6 352.0</b>	RCO (FAIRBANKS) <b>122.6</b>	CTAF <b>126.2</b>	AWOS-3
--	---------------------------------	----------------------	--------

CAUTION: Rwy located on a slope of a 3415' mountain with W end at the base of cliff, APPROACH ONLY FROM THE EAST.

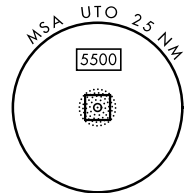
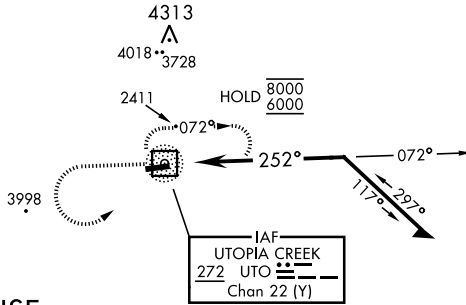
CAUTION: Terrain, 982' MSL, 200' from thld, 872' left of course.

Successful go around improbable if initiated past MAP.

Uncontrolled Airspace below 700' AGL within 4 NM of Indian Mountain airport.

Visibility reduction by helicopters NA.

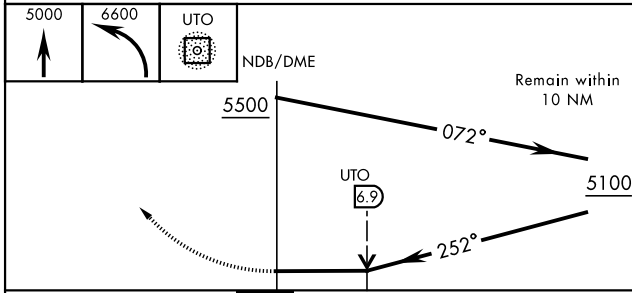
PAPI Beyond 8° right of RCL unusable.



## NOT FOR CIVIL USE

## MILITARY CERTIFIED AIRCREWS or AUTHORIZED CONTRACT AIRCRAFT ONLY

EMERG SAFE ALT 100 NM 10,100



ELEV 1261	TDZE 1161
Land Rwy 24 Take-off Rwy 6	
REIL Rwy 24	

CATEGORY	A	B	C	D
S-24	3940-1¼ 2779 (2700-1¼)	3940-1½ 2779 (2700-1½)	3940-3 2779	(2700-3)
<b>C</b> CIRCLING	NOT AUTHORIZED			

# NDB RWY 24

AK, 11 JUL 2024 to 05 SEP 2024

AK, 11 JUL 2024 to 05 SEP 2024