

# RNAV (GPS) RWY 17

APCH CRS	Rwy Idg	<b>8001</b>
<b>166°</b>	TDZE	<b>322</b>
	Arpt Elev	<b>322</b>

AL-2440 [USN]

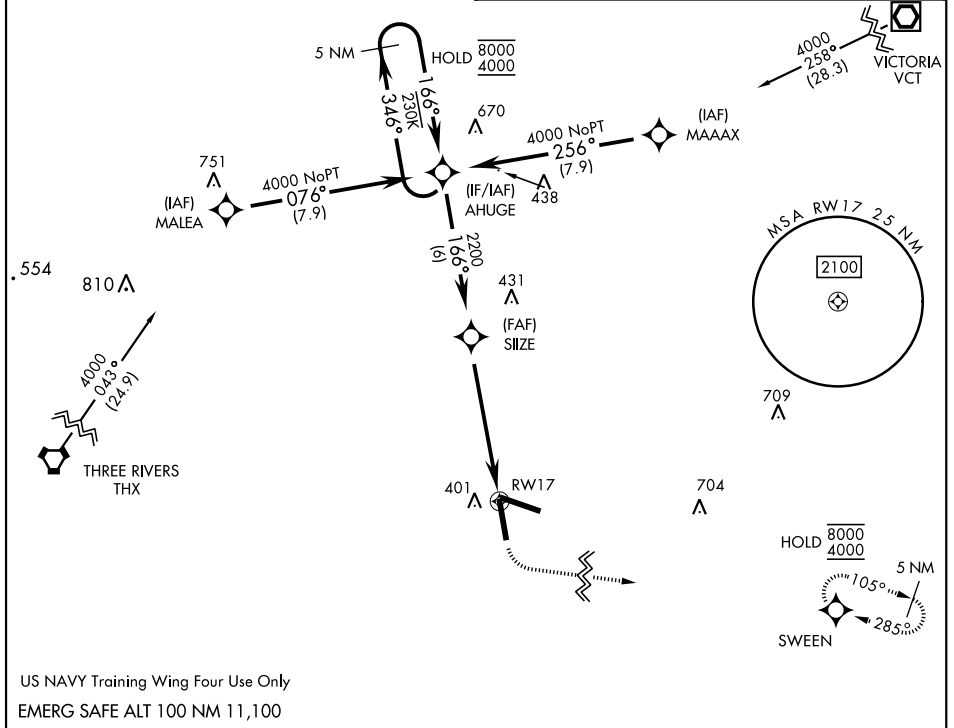
GOLIAD NOLF (KNGT)

RNP APCH

When local altimeter setting not received, use Beeville Muni altimeter setting.

MISSED APPROACH: Climb to 900 then climbing left turn to 4000 direct SWEENEY and hold, continue climb-in-hold to 4000.

ASOS <b>353.675</b>	CTAF <b>132.875 307.075</b>
------------------------	--------------------------------



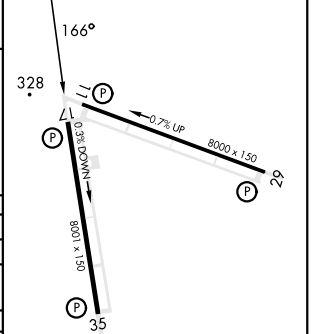
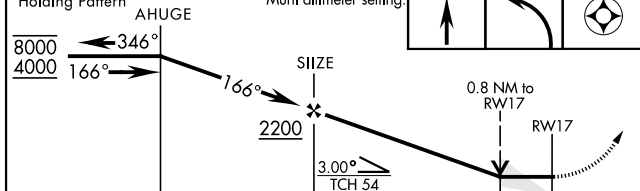
SC-3, 11 JUL 2024 to 08 AUG 2024

SC-3, 11 JUL 2024 to 08 AUG 2024

US NAVY Training Wing Four Use Only

EMERG SAFE ALT 100 NM 11,100

5 NM Holding Pattern	VDP NA with Beeville Muni altimeter setting.	900	4000	SWEENEY	ELEV 322	TDZE 322
----------------------	--	-----	------	---------	----------	----------



CATEGORY	A	B	C	D
LNAV MDA		640-1	318	(400-1)
CIRCLING	760-1 438 (500-1)	780-1 458 (500-1)	780-1½ 458 (500-1½)	880-2 558 (600-2)
BEEVILLE MUNI ALTIMETER SETTING MINIMA				
LNAV MDA		680-1	358	(400-1)
CIRCLING	800-1 478 (500-1)	820-1 498 (500-1)	820-1½ 498 (500-1½)	880-2 558 (600-2)

HIRL Rwy 11-29, 17-35  
TDZL Rwy 11, 29, 17, 35

# RNAV (GPS) RWY 17