

RNAV (GPS) RWY 29

APCH CRS	Rwy Idg	8000
285°	TDZE	285
	Arprt Elev	322

AL-2440 [USN]

GOLIAD NOLF (KNGT)

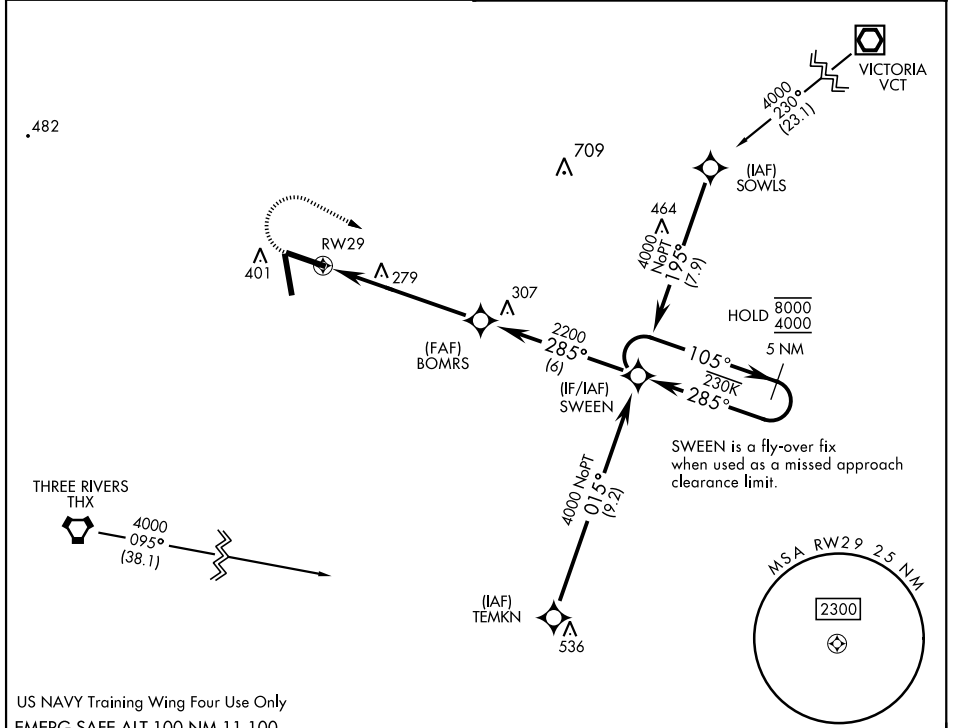
RNP APCH

When local altimeter setting not received, use Beeville Muni altimeter setting.

MISSED APPROACH: Climb to 900 then climbing right turn to 4000 direct SWEEN and hold, continue climb-in-hold to 4000.

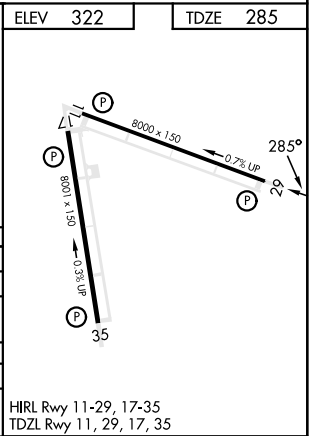
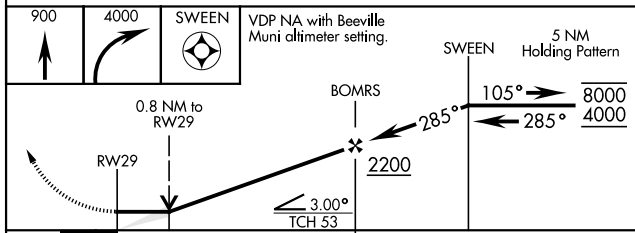
ASOS
353.675

CTAF
132.875 307.075



SWEEN is a fly-over fix when used as a missed approach clearance limit.

US NAVY Training Wing Four Use Only
EMERG SAFE ALT 100 NM 11,100



CATEGORY	A	B	C	D
LNAV MDA	580-1		295	(300-1)
CIRCLING	760-1 438 (500-1)	780-1 458 (500-1)	780-1½ 458 (500-1½)	880-2 558 (600-2)
BEEVILLE MUNI ALTIMETER SETTING MINIMA				
LNAV MDA	640-1		355	(400-1)
CIRCLING	800-1 478 (500-1)	820-1 498 (500-1)	820-1½ 498 (500-1½)	880-2 558 (600-2)

HIRL Rwy 11-29, 17-35
TDZL Rwy 11, 29, 17, 35

RNAV (GPS) RWY 29

SC-3, 11 JUL 2024 to 08 AUG 2024

SC-3, 11 JUL 2024 to 08 AUG 2024