

# ESSAA ONE (RNAV) DEPARTURE (ESSAA1 • ESSAA)

TONOPAH TEST RANGE (KTNX)

TONOPAH, NEVADA

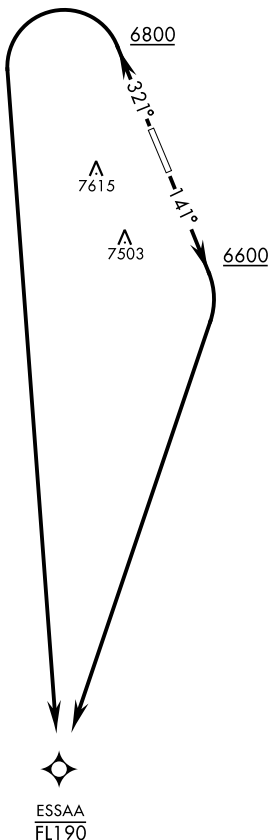
AWOS 113.0  
 GND CON  
 127.25 335.5  
 SILVERBOW TOWER ★  
 124.75 257.95  
 NELLIS CONTROL  
 119.35 254.4

[USAF] AL-3188

Rwy	Knots	60	120	180	240	300	360
14 (A)	V/V(fpm)	387	774	1161	1548	1935	2322
32 (B)	V/V(fpm)	336	672	1008	1344	1680	2016

Minimum Climb Rate

- (A) to 8200
- (B) to 8300



SW-4, 11 JUL 2024 to 08 AUG 2024

SW-4, 11 JUL 2024 to 08 AUG 2024

RNAV1

## GPS REQUIRED

### DEPARTURE ROUTE DESCRIPTION

TAKEOFF RWY 14: Climb on heading 141° to 6600, then right turn direct to cross ESSAA at or below FL190 or as assigned by ATC.

TAKEOFF RWY 32: Climb on heading 321° to 6800, then left turn direct ESSAA maintain at or below FL190 or as assigned by ATC.

# ESSAA ONE (RNAV) DEPARTURE (ESSAA1 • ESSAA)

Orig 24MAR22

TONOPAH, NEVADA  
TONOPAH TEST RANGE (KTNX)