

18200

# TUMBE ONE (RNAV) DEPARTURE (TUMBE1 · TUMBE)

TONOPAH TEST RANGE (KTNX)

TONOPAH, NEVADA

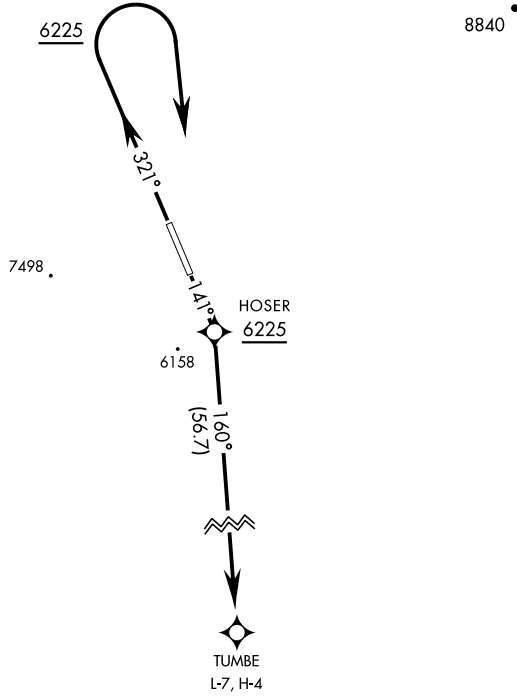
GND CON  
 127.25 335.5  
 SILVERBOW TOWER ★  
 124.75 257.95  
 NELLIS CONTROL  
 119.35 254.4

SHL-3188 [USAF]

| Rwy    | Knots    | 60  | 120 | 180 | 240  | 300  | 360  |
|--------|----------|-----|-----|-----|------|------|------|
| 14 (a) | V/V(fpm) | 300 | 600 | 900 | 1200 | 1500 | 1800 |
| 32 (b) | V/V(fpm) | 265 | 530 | 795 | 1060 | 1325 | 1590 |

Minimum Climb Rate

- (a) to 10,700
- (b) to 5900



## GPS REQUIRED

For use by E/F/G and R (RNP 2.0)  
 equipped A/C only.

### DEPARTURE ROUTE DESCRIPTION

TAKE-OFF RWY 14: Fly heading 141°, at 6225 (HOSER) turn right direct TUMBE.

TAKE-OFF RWY 32: Fly heading 321°, at 6225 turn right direct TUMBE.

# TUMBE ONE (RNAV) DEPARTURE (TUMBE1 · TUMBE)

TONOPAH, NEVADA

TONOPAH TEST RANGE (KTNX)

SW-4, 11 JUL 2024 to 08 AUG 2024

SW-4, 11 JUL 2024 to 08 AUG 2024