

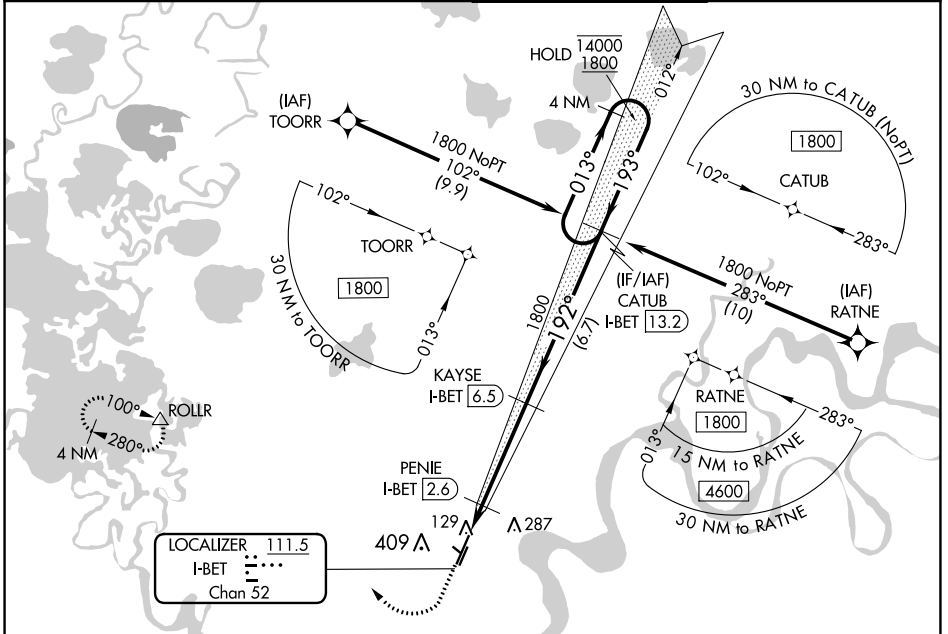
LOC/DME I-BET	APP CRS	Rwy Idg	6400
111.5	192°	TDZE	120
Chan 52		Apt Elev	129

ILS Y or LOC Y RWY 19R

BETHEL (BET)(PABE)

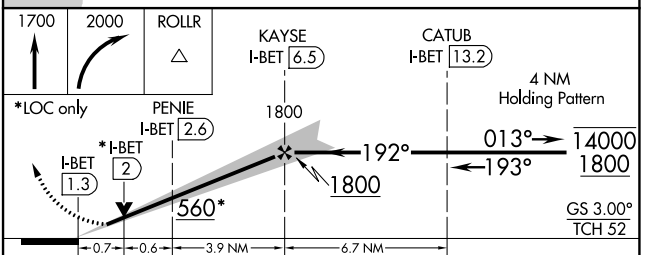
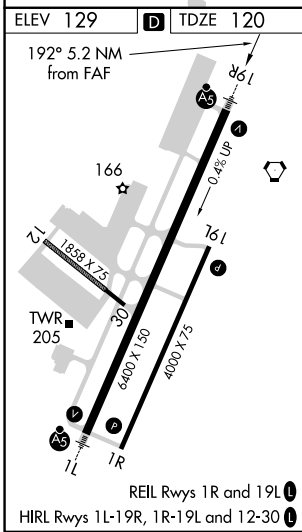
DME required. RNAV 1-GPS required.		MALSR	MISSED APPROACH: Climb to 1700 then climbing right turn to 2000 direct ROLLR and hold.
⚠ Circling NA west of Rwy 1L-19R. For inop ALS, increase S-LOC-19R Cat C/D visibility to RVR 4000. # RVR 1800 authorized with use of FD or AP or HUD to DA.			

ATIS 119.8	ANCHORAGE CENTER 125.2 372.0	BETHEL TOWER * 118.7 (CTAF) 0	GND CON 121.7
----------------------	--	---	-------------------------



AK, 11 JUL 2024 to 05 SEP 2024

AK, 11 JUL 2024 to 05 SEP 2024



CATEGORY	A	B	C	D
S-ILS 19R#	320/24 200 (200-½)			
S-LOC 19R	380/24 260 (300-½)			
CIRCLING	500-1 371 (400-1)	600-1 471 (500-1)	600-1½ 471 (500-1½)	680-2 551 (600-2)