

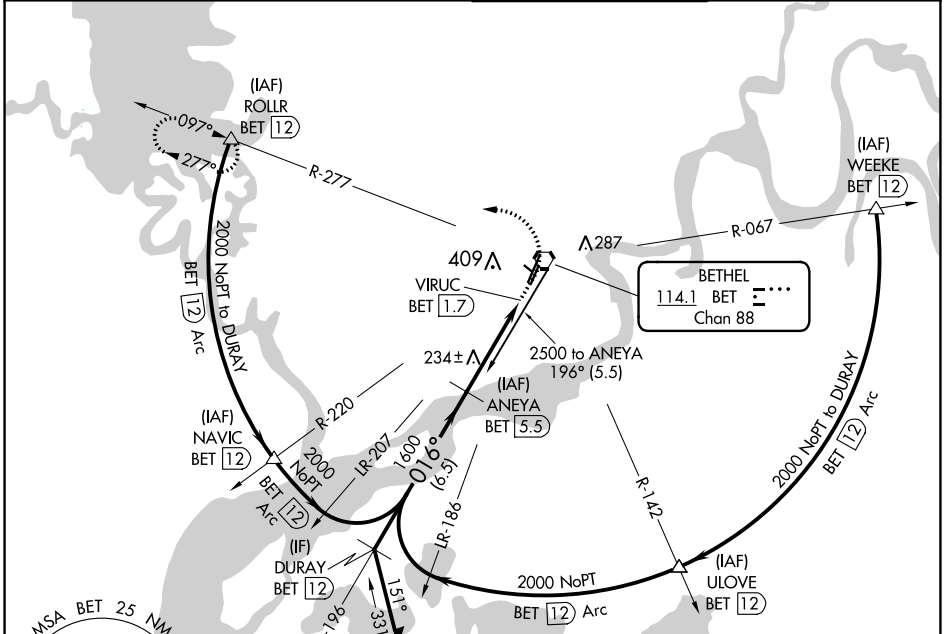
VORTAC BET <b>114.1</b> Chan <b>88</b>	APP CRS <b>016°</b>	Rwy ldg TDZE <b>127</b> Apt Elev <b>129</b>
--	------------------------	---

# VOR RWY 1L

BETHEL (BET)(PABE)

DME required. ▼ Circling NA west of Rwy 1L-19R. For inop ALS, increase S-1L Cat C/D visibility to RVR 5500.	MALSR AS	MISSED APPROACH: Climb to 800 then climbing left turn to 2000 on BET VORTAC R-277 to ROLLR/12 DME and hold.
--	-------------	---

ATIS <b>119.8</b>	ANCHORAGE CENTER <b>125.2 372.0</b>	BETHEL TOWER * <b>118.7 (CTAF)</b> 0	GND CON <b>121.7</b>
----------------------	--	---	-------------------------



AK, 11 JUL 2024 to 05 SEP 2024

AK, 11 JUL 2024 to 05 SEP 2024

ELEV 129	TDZE 127
HIRL Rws 1L-19R, 1R-19L and 12-30	
REIL Rws 1R and 19L	

