

WAAS CH 58239 W04A	APP CRS 051°	Rwy Idg TDZE Apt Elev	5001 693 720
--	------------------------	-----------------------------	---

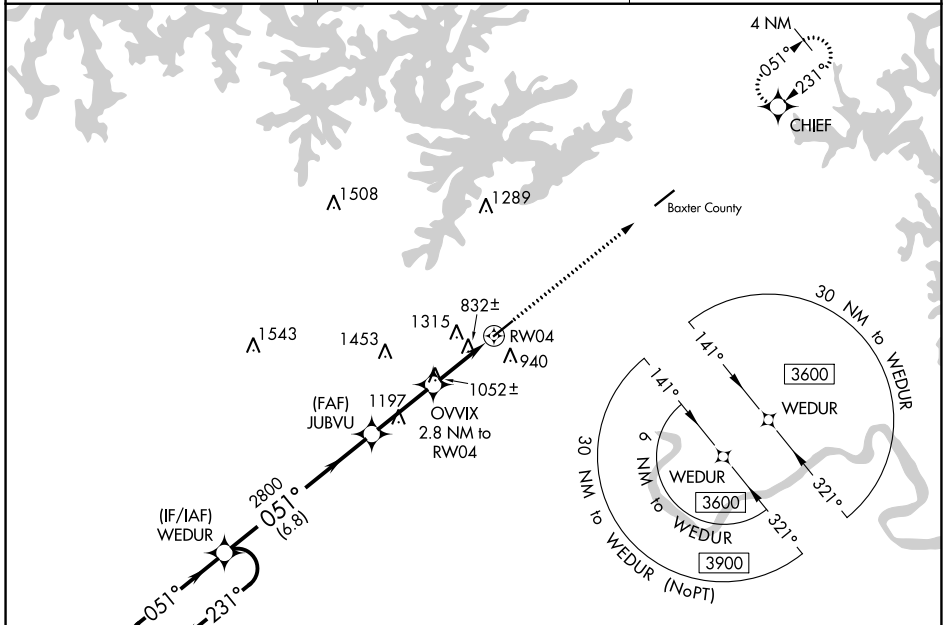
RNAV (GPS) RWY 4

MARION COUNTY RGNL (FLP)

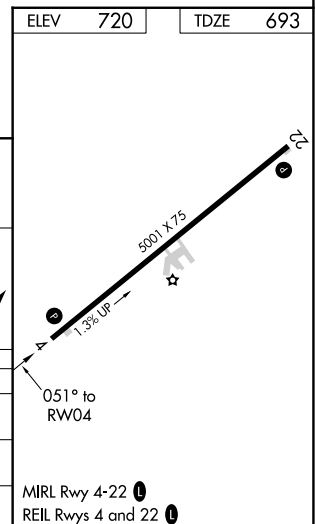
▽ DME/DME RNP-0.3 NA. Procedure NA at night.
▲ Rwy 4 helicopter visibility reduction below 1 SM NA.
 Circling NA northwest of Rwy 4-22.

MISSED APPROACH: Climb to 3400 direct CHIEF and hold.

AWOS-3PT 132.075	MEMPHIS CENTER 126.85 281.55	UNICOM 123.0 (CTAF) ①
----------------------------	--	--



4 NM Holding Pattern		WEDUR		3400	CHIEF
3600		2800		1740	
← 231°		051° →		3.50°	
← 051°		→		2.8 NM to RWY 04	
← 6.8 NM		← 2.8 NM		← 2.8 NM	
CATEGORY	A	B	C	D	
LP MDA	1100-1	407 (400-1)	1100-1 3/8 407 (400-1 3/8)	NA	
LNAV MDA	1500-1 807 (800-1)	1500-1 1/4 807 (800-1 1/4)	1500-2 1/2 807 (800-2 1/2)	NA	
C CIRCLING	1500-1 780 (800-1)	1500-1 1/4 780 (800-1 1/4)	1500-2 1/2 780 (800-2 1/2)	NA	



SC-1, 11 JUL 2024 to 08 AUG 2024

SC-1, 11 JUL 2024 to 08 AUG 2024