

WAAS CH 50540 W18A	APP CRS 182°	Rwy Idg TDZE 188 Apt Elev 188	4503
--	------------------------	---	-------------

RNAV (GPS) RWY 18

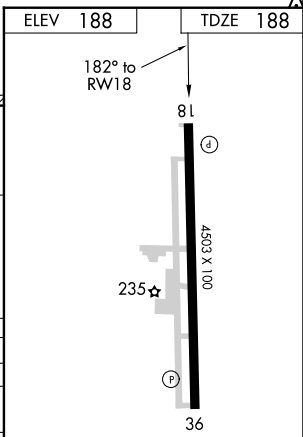
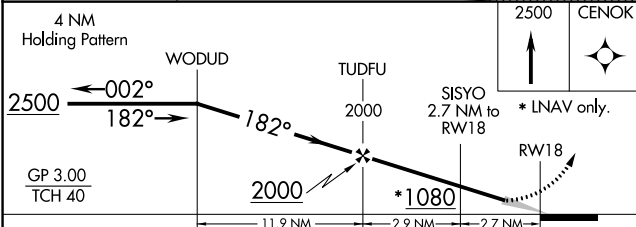
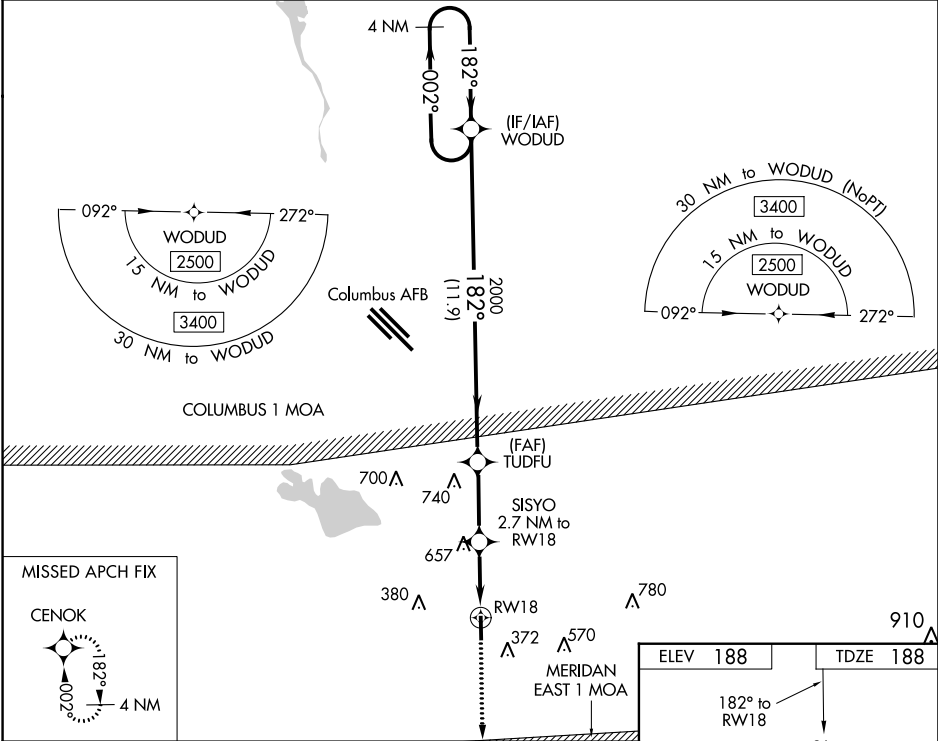
COLUMBUS-LOWNDES COUNTY (UBS)

NA DME/DME RNP-0.3 NA. Use Columbus AFB altimeter setting; when not received, use Golden Triangle Rgnl altimeter setting and increase all DA 5 feet and all MDA 20 feet. Baro-VNAV NA.

MISSED APPROACH: Climb to 2500 direct CENOK and hold.

COLUMBUS APP CON ★
135.6 323.275

UNICOM
122.8 (CTAF)



CATEGORY	A	B	C	D
LPV DA		469-1	281 (300-1)	
LNAV/VNAV DA		1107-4	919 (1000-4)	
LNAV MDA	1000-1 812 (900-1)	1000-1¼ 812 (900-1¼)	1000-2½ 812 (900-2½)	812 (900-2½)
C CIRCLING	1000-1¼ 812 (900-1¼)		1040-2½ 852 (900-2½)	1040-2¾ 852 (900-2¾)

MIRL Rwy 18-36 **0**

SC-4, 11 JUL 2024 to 08 AUG 2024

SC-4, 11 JUL 2024 to 08 AUG 2024