

VOR FKL <b>109.6</b>	APP CRS <b>187°</b>	Rwy ldg TDZE <b>1540</b> Apt Elev <b>1540</b>
-------------------------	------------------------	-----------------------------------------------------

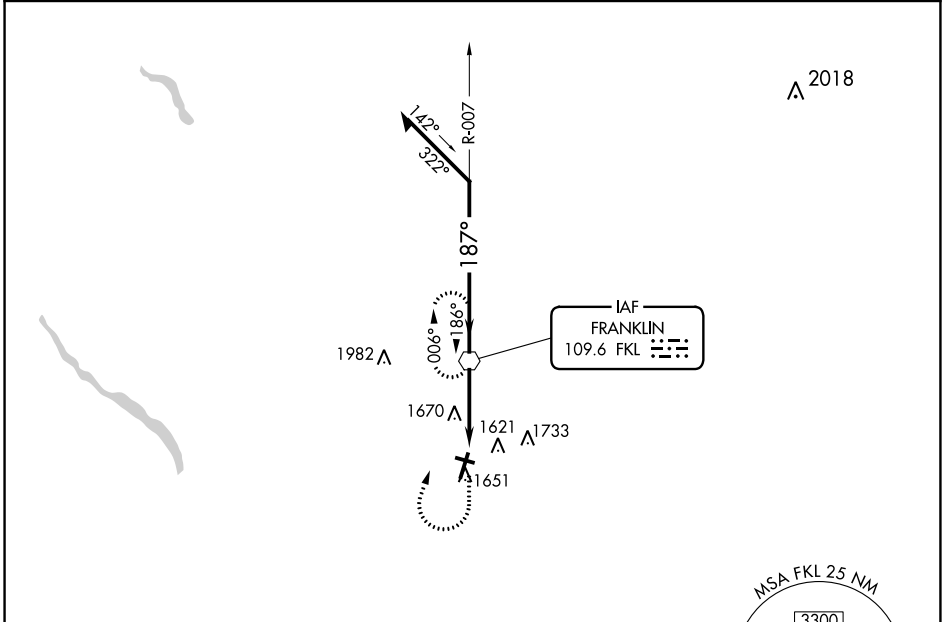
**VOR RWY 21**  
VENANGO RGNL (F'KL)

**⚠** Inop table does not apply. When local altimeter setting not received, use Port Meadville altimeter setting and increase all MDA 80 feet and S-21 Cats C/D visibility 3/8 mile. Circling Rwy 12 NA at night. Rwy 12 helicopter visibility reduction below 1 SM NA.

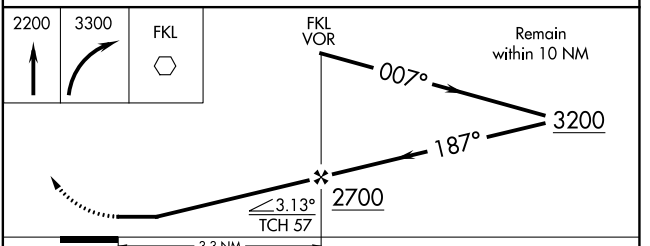
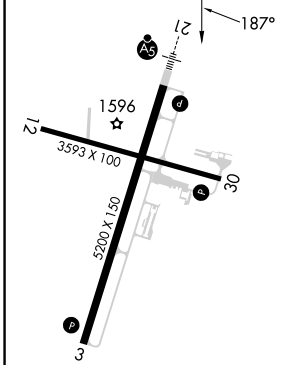
**MALSR**  
AS

**MISSED APPROACH:** Climb to 2200, then climbing right turn to 3300 direct FKL VOR and hold.

AWOS-3PT <b>118.175</b>	YOUNGSTOWN APP CON ★ <b>126.25 322.3</b>	CLNC DEL <b>126.25</b>	UNICOM <b>122.7</b> (CTAF) <b>⓪</b>
----------------------------	---------------------------------------------	---------------------------	----------------------------------------



ELEV 1540	<b>D</b>	TDZE 1540
-----------	----------	-----------



FAF to MAP 3.3 NM

Knots	60	90	120	150	180
Min:Sec	3:18	2:12	1:39	1:19	1:06

MIRL Rwy 12-30 **⓪**  
HIRL Rwy 3-21 **⓪**

NE-4, 11 JUL 2024 to 08 AUG 2024

NE-4, 11 JUL 2024 to 08 AUG 2024