

(SNOOZ5.SNOOZ) 24137  
**SNOOZ FIVE DEPARTURE**

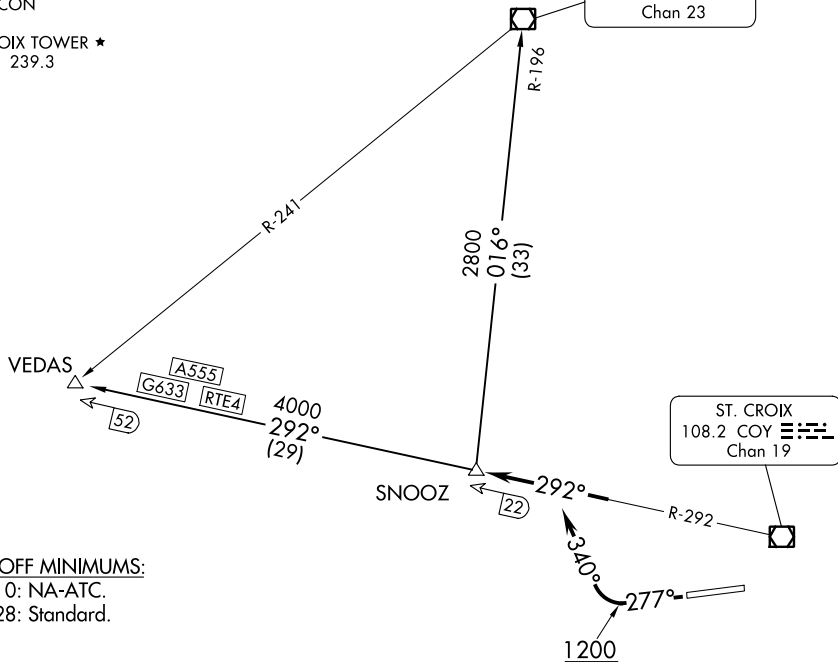
AL-5008 (FAA)

HENRY E ROHLSSEN (STX)(TISX)  
 CHRISTIANSTED, ST. CROIX, VIRGIN ISLANDS

SAN JUAN CERAP DEP CON  
 128.65 279.6  
 ATIS 135.65  
 GND CON  
 121.7  
 ST CROIX TOWER ★  
 118.6 239.3

**TOP ALTITUDE:  
 6000**

ST. THOMAS  
 108.6 STT  
 Chan 23



TAKEOFF MINIMUMS:  
 Rwy 10: NA-ATC.  
 Rwy 28: Standard.

NOTE: Not authorized for turbojet aircraft.

NOTE: Chart not to scale.

**DEPARTURE ROUTE DESCRIPTION**

TAKEOFF RUNWAY 28: Climb on heading 277° to 1200, then climbing right turn on heading 340° to intercept COY VOR/DME R-292 to SNOOZ INT. Maintain 6000 or ATC assigned altitude, expect further clearance to filed altitude within ten (10) minutes after departure.

ST THOMAS TRANSITION (SNOOZ5.STT): From over SNOOZ INT on STT R-196 to STT VOR/DME.

VEDAS TRANSITION (SNOOZ5.VEDAS): From over SNOOZ INT on COY R-292 to VEDAS INT.

**SNOOZ FIVE DEPARTURE**  
 (SNOOZ5.SNOOZ) 24MAR22

CHRISTIANSTED, ST. CROIX, VIRGIN ISLANDS  
 HENRY E ROHLSSEN (STX)(TISX)

SE-3, 11 JUL 2024 to 08 AUG 2024

SE-3, 11 JUL 2024 to 08 AUG 2024