

WAAS CH 53537 W21A	APP CRS 205°	Rwy Idg TDZE 935 Apt Elev 937
--	------------------------	---

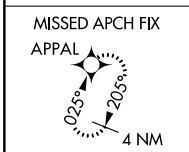
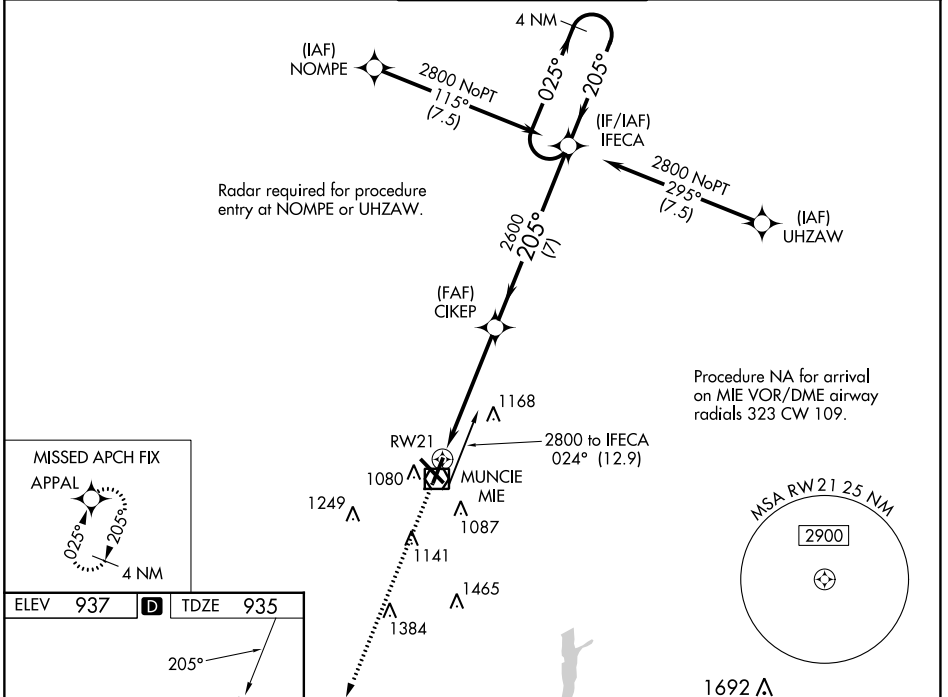
RNAV (GPS) RWY 21

DELAWARE COUNTY RGNL (MIE)

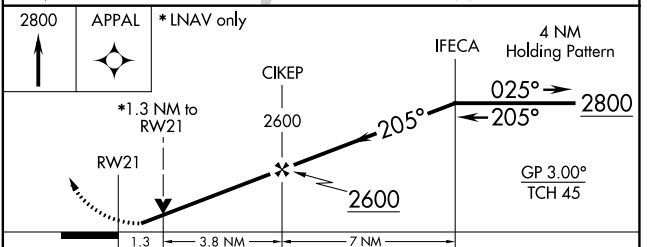
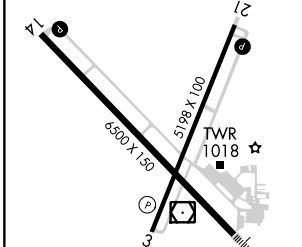
⚠ For uncompensated Baro-VNAV systems, LNAV/VNAV NA below -20°C (-4°F) or above 54°C (130°F). DME/DME RNP-0.3 NA. When local altimeter setting not received, use Fort Wayne Intl altimeter setting and increase all DA 121 feet and all MDA 140 feet; increase LPV all Cats and LNAV Cats C/D visibility 3/8 mile and LNAV/VNAV all Cats and Circling Cats C/D visibility 1/2 mile. Baro-VNAV and VDP NA when using Fort Wayne Intl altimeter setting. Helicopter visibility reduction below 3/4 SM NA.

MISSED APPROACH: Climb to 2800 direct APPAL and hold.

ATIS 133.25	INDIANAPOLIS APP CON 120.65 317.8	MUNCIE TOWER ★ 120.1 (CTAF)	GND CON 121.9	UNICOM 122.95
-----------------------	---	---------------------------------------	-------------------------	-------------------------



ELEV 937	D	TDZE 935
-----------------	----------	-----------------



CATEGORY	A	B	C	D
LPV DA		1195-7/8	260 (300-7/8)	
LNAV/VNAV DA		1351-13/8	416 (500-13/8)	
LNAV MDA	1400-1	465 (500-1)	1400-13/8 465 (500-13/8)	
C CIRCLING	1460-1	523 (600-1)	1500-1 1/2 563 (600-1 1/2)	1600-2 663 (700-2)

HIRL Rwy 14-32 **L**
MIRL Rwy 3-21 **L**
REIL Rwy 3, 14 and 21 **L**

EC-2, 11 JUL 2024 to 08 AUG 2024

EC-2, 11 JUL 2024 to 08 AUG 2024