

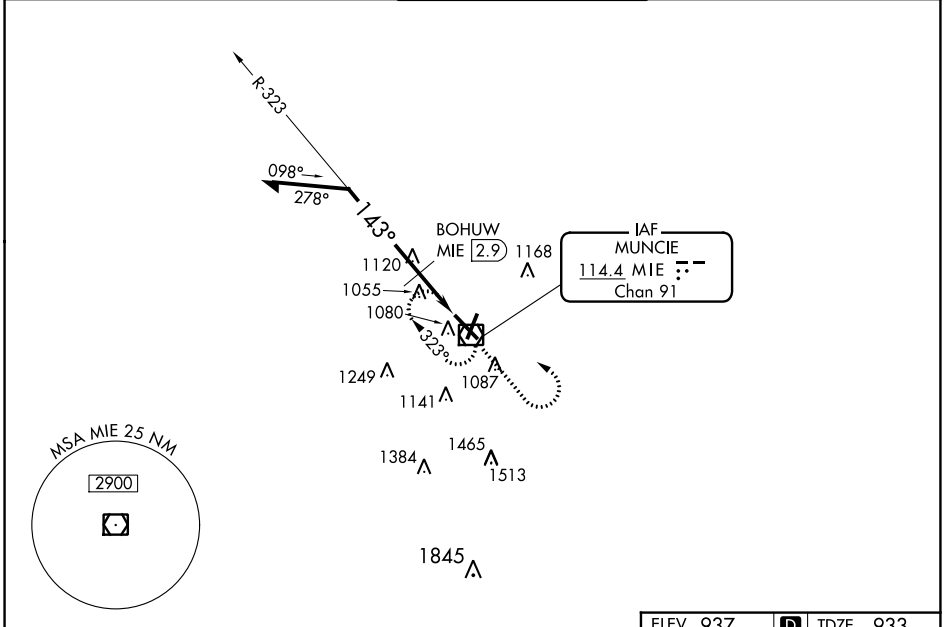
VOR/DME MIE 114.4 Chan 91	APP CRS 143°	Rwy Idg 6500 TDZE 933 Apt Elev 937
---	------------------------	---

VOR RWY 14
DELAWARE COUNTY RGNL (MIE)

⚠ When local altimeter setting not received, use Fort Wayne Intl altimeter setting and increase all MDAs 140 feet; increase S-14 Cat C visibility ½ SM, Cat D ¼ SM; increase Circling Cat C/D visibility ½ SM. BOHUW fix minimums: increase S-14 Cat C visibility ½ SM, Cat D ¼ SM and Circling Cat C/D visibility ½ SM. VDP NA with Fort Wayne altimeter setting.

⚠ MISSED APPROACH: Climb to 2600 then left turn direct MIE VOR/DME and hold.

ATIS 133.25	INDIANAPOLIS APP CON 120.65 317.8	MUNCIE TOWER ★ 120.1 (CTAF) 0	GND CON 121.9	UNICOM 122.95
-----------------------	---	---	-------------------------	-------------------------



Remain within 10 NM BOHUW MIE 2.9 MIE VOR/DME 2600 *1480 *1620 when using Fort Wayne Intl altimeter setting.		ELEV 937	D	TDZE 933
CATEGORY	A	B	C	D
S-14	1480-1 547 (600-1)		1480-1½ 547 (600-1½)	1480-1¾ 547 (600-1¾)
C CIRCLING	1480-1 543 (600-1)		1480-1½ 543 (600-1½)	1560-2 623 (700-2)
BOHUW FIX MINIMUMS				
S-14	1380-1 447 (500-1)		1380-1¼ 447 (500-1¼)	1380-1½ 447 (500-1½)
C CIRCLING	1460-1 523 (600-1)		1480-1½ 543 (600-1½)	1560-2 623 (700-2)

Diagram of the Muncie VOR RWY 14 approach. It shows the 143° bearing, the 2600 ft MDA, and various altitudes and bearings (143°, 121°, 135°, 155°, 175°, 195°, 215°, 235°, 255°, 275°, 295°, 315°, 335°). The diagram also shows the TWR 1018 and the 6500 X 150 runway.

EC-2, 11 JUL 2024 to 08 AUG 2024

EC-2, 11 JUL 2024 to 08 AUG 2024

HIRL Rwy 14-32 **0**
MIRL Rwy 3-21 **0**
REIL Rwys 3, 14 and 21 **0**