

PIQUA, OHIO

AL-5022 (FAA)

24137

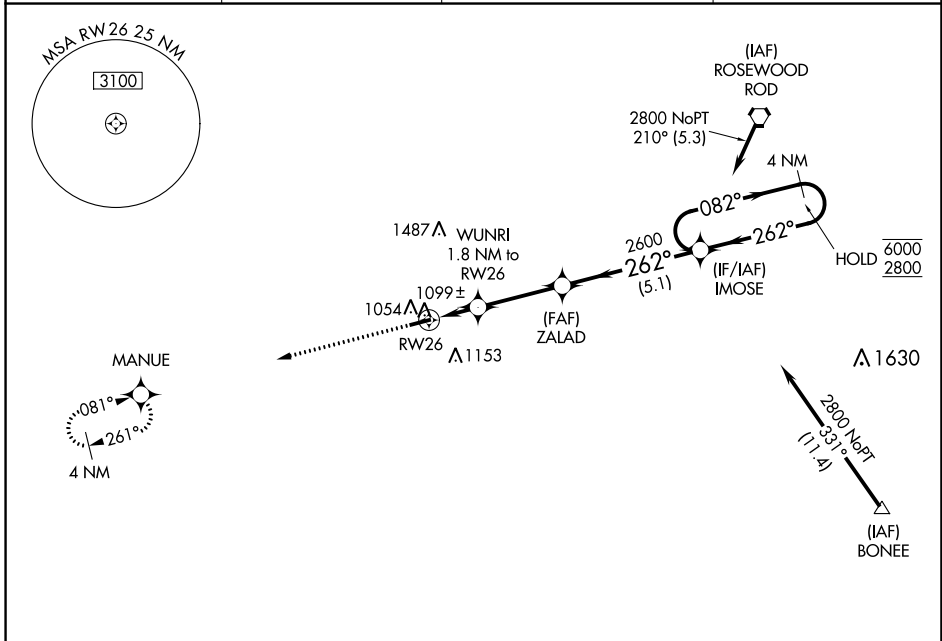
WAAS CH 86745 W26A	APP CRS 262°	Rwy Idg TDZE 986 Apt Elev 993	3998
--	------------------------	---	-------------

RNAV (GPS) RWY 26

PIQUA/HARTZELL FLD (I17)

RNP APCH - GPS.	MISSED APPROACH: Climb to 2700 direct MANUE and hold.
NA Baro-VNAV NA. Use Versailles altimeter setting.	

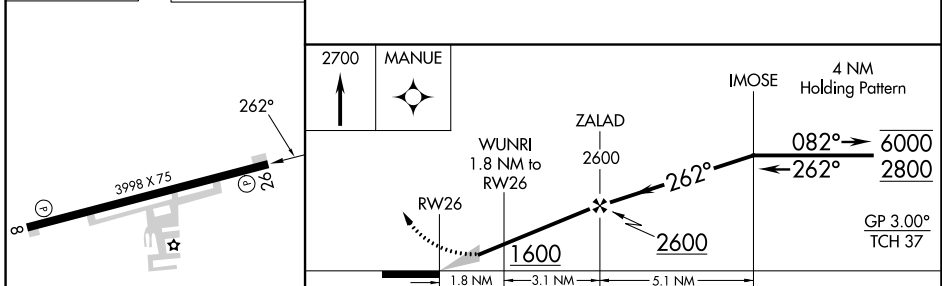
DAY ASOS 125.8	VES AWOS-3T 125.9	COLUMBUS APP CON 134.45 294.5 352.05	UNICOM 123.0 (CTAF) 0
--------------------------	-----------------------------	--	--



EC-2, 11 JUL 2024 to 08 AUG 2024

EC-2, 11 JUL 2024 to 08 AUG 2024

ELEV 993	TDZE 986
-----------------	-----------------



CATEGORY	A	B	C	D
LPV DA	1213-1		227 (300-1)	NA
LNAV/VNAV DA	1296-1		310 (400-1)	NA
LNAV MDA	1380-1	394 (400-1)	1380-1½ 394 (400-1½)	NA
C CIRCLING	1440-1 447 (500-1)	1540-1 547 (600-1)	1560-1½ 567 (600-1½)	NA

PIQUA, OHIO
Amdt 1A 07SEP23

40°10'N-84°19'W

PIQUA/HARTZELL FLD (I17)

RNAV (GPS) RWY 26