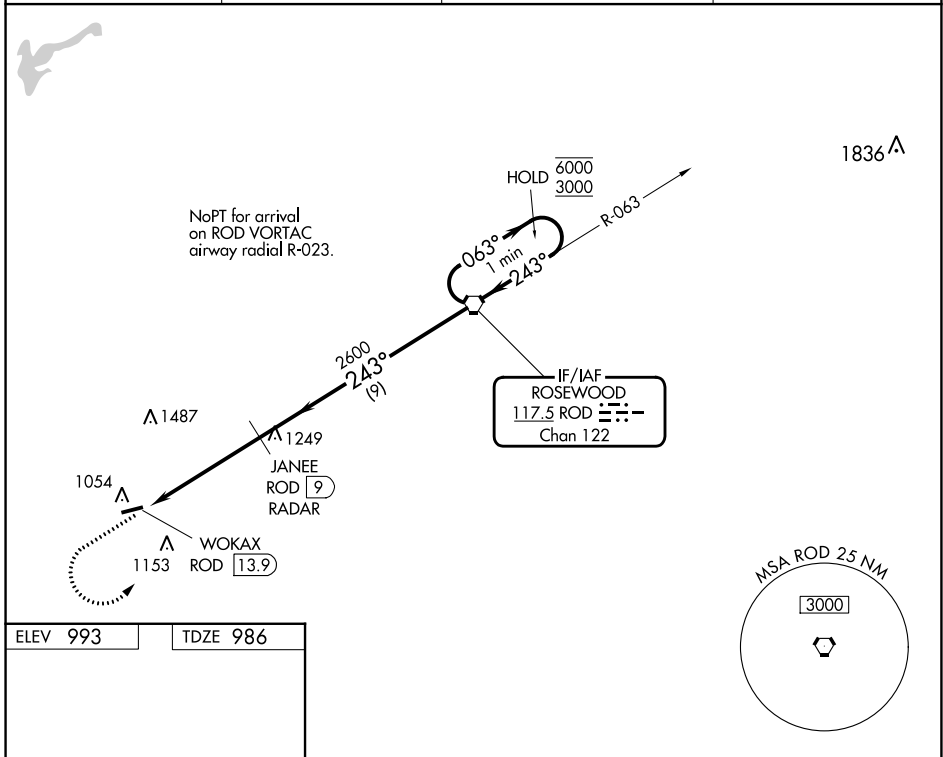


VORTAC ROD 117.5 Chan 122	APP CRS 243°	Rwy Idg TDZE Apt Elev	3998 986 993
---	------------------------	-----------------------------	---

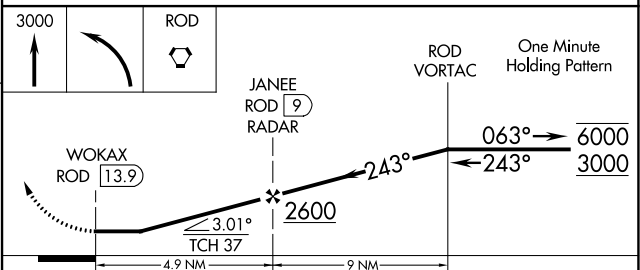
VOR RWY 26

PIQUA/HARTZELL FLD (I17)

DME or RADAR required.		MISSED APPROACH: Climb to 3000 then left turn direct ROD VORTAC and hold.	
▼ Rwy 26 helicopter visibility reduction below 3/4 SM NA. ▲ NA Use James M Cox Dayton Intl altimeter setting.		DAY ASOS 125.8	VES AWOS-3T 125.9
		COLUMBUS APP CON 134.45 294.5 352.05	UNICOM 123.0 (CTAF) 0



ELEV 993	TDZE 986
MIRL Rwy 8-26 0 REIL Rws 8 and 26 0	
FAF to MAP 4.9 NM	
Knots	60 90 120 150 180
Min:Sec	4:54 3:16 2:27 1:58 1:38



WOKAX ROD 13.9	JANEY ROD 9 RADAR	ROD VORTAC	One Minute Holding Pattern
CATEGORY		A	B
S-26		1500-1 514 (600-1)	1500-1 3/8 514 (600-1 3/8)
CIRCLING		1500-1 507 (600-1)	1560-1 567 (600-1)
		1560-1 1/2 567 (600-1 1/2)	1880-3 887 (900-3)

EC-2, 11 JUL 2024 to 08 AUG 2024

EC-2, 11 JUL 2024 to 08 AUG 2024