

WAAS CH <b>65639</b> <b>W19A</b>	APP CRS <b>184°</b>	Rwy Idg TDZE Apt Elev	<b>4003</b> <b>620</b> <b>620</b>
--	------------------------	-----------------------------	---

# RNAV (GPS) RWY 19

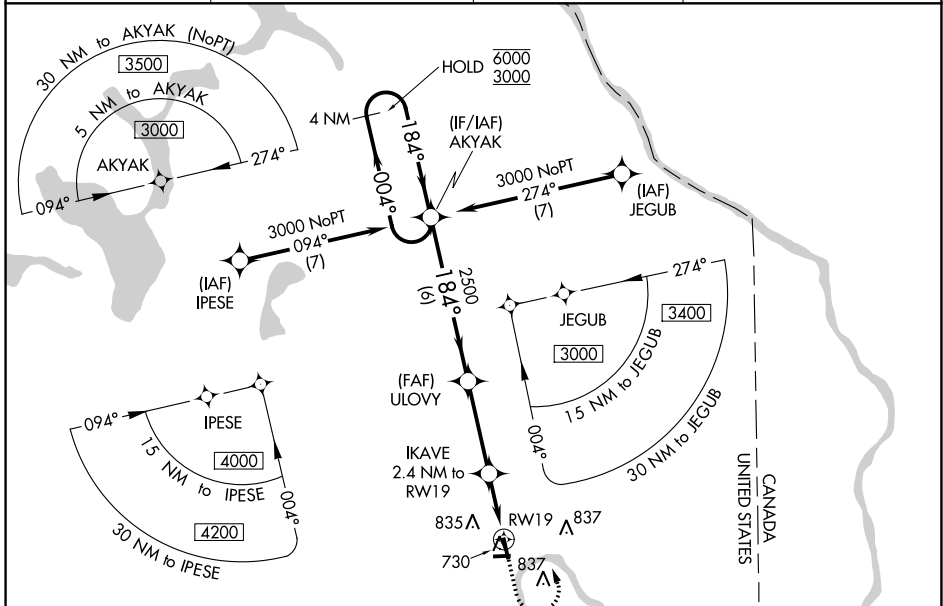
CARIBOU MUNI (CAR)

RNP APCH.

**⚠** Baro-VNAV and VDP NA when using Presque Isle altimeter setting. Rwy 19 helicopter visibility reduction below 3/4 SM NA. For uncompensated Baro-VNAV systems, LNAV/VNAV NA below -21°C or above 54°C. Circling Rwy 1, 11, 29 NA at night. When local altimeter setting not received, use Presque Isle altimeter setting and increase all DAs 49 feet and all MDAs 60 feet. Increase LNAV Cats C, D visibility 1/8 SM and Circling Cat D visibility 1/4 SM.

**MISSED APPROACH:**  
Climb to 1300 then climbing left turn to 3000 direct AKYAK and hold.

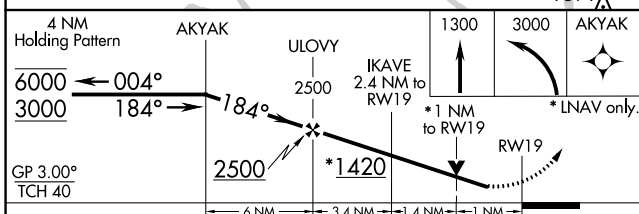
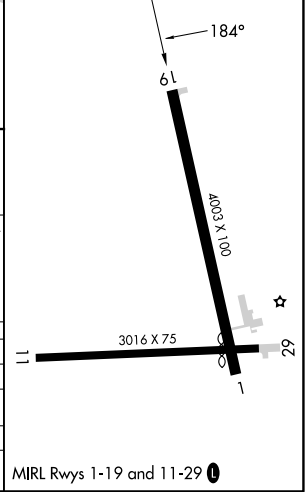
ASOS <b>135.125</b>	BOSTON CENTER <b>124.75 239.05</b>	CLNC DEL <b>124.75</b>	UNICOM <b>122.8 (CTAF) 0</b>
------------------------	---------------------------------------	---------------------------	---------------------------------



NE-1, 11 JUL 2024 to 08 AUG 2024

NE-1, 11 JUL 2024 to 08 AUG 2024

ELEV 620	TDZE 620
----------	----------



CATEGORY	A	B	C	D
LPV DA		870-1	250 (300-1)	
LNAV/VNAV DA		894-1	274 (300-1)	
LNAV MDA		980-1	360 (400-1)	
<b>CIRCLING</b>	1140-1	520 (600-1)	1140-1 1/2 520 (600-1 1/2)	1400-2 1/2 780 (800-2 1/2)

MIRL Rwy 1-19 and 11-29 0