


WAAS CH <b>82004</b> <b>W05A</b>	APP CRS <b>050°</b>	Rwy ldg <b>10960</b> TDZE <b>93</b> Apt Elev <b>93</b>
--	------------------------	--

# RNAV (GPS) RWY 5

KINSTON RGNL JETPORT AT STALLINGS FLD (ISO)

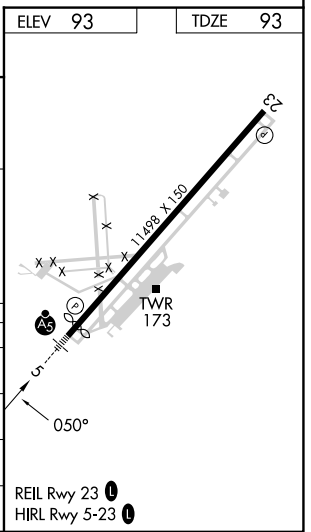
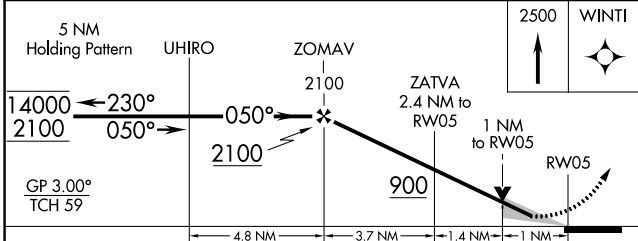
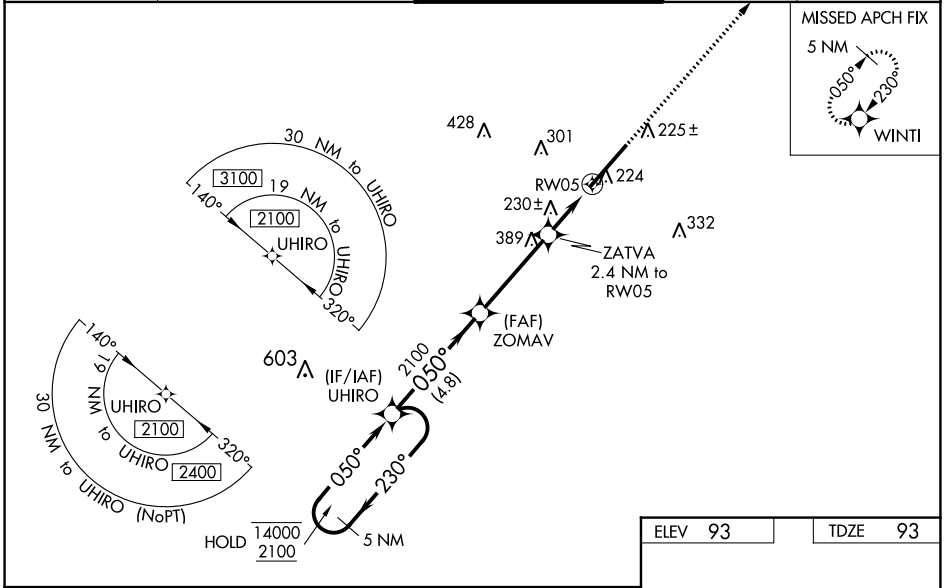
RNP APCH - GPS.

**⚠** For uncompensated Baro-VNAV systems, LNAV/VNAV NA below -15°C or above 54°C. Baro-VNAV and VDP NA when using Seymour Johnson AFB altimeter setting. When local altimeter setting not received, use Seymour Johnson AFB altimeter setting: increase DA to 336 feet; increase LNAV/VNAV DA to 529 feet and all visibilities to RVR 4000; increase all MDAs 60 feet and LNAV visibility Cat C/D to RVR 4500 and Circling visibility Cat D ¼ SM. For inop MALS, increase LNAV/VNAV all Cats visibility to RVR 4500 and LNAV Cats A and B visibility to RVR 5500 and Cats C and D to RVR 6000. For inop MALS when using Seymour Johnson AFB altimeter setting, increase LNAV Cats A and B visibility to RVR 5500 and Cats C and D to 1½ mile. \*RVR 1800 authorized with use of FD or AP or HUD to DA (NA when using Seymour Johnson AFB altimeter setting).

**MALS** 

**MISSED APPROACH:** Climb to 2500 direct WINTI and hold.

AWOS-3 <b>132.75</b>	SEYMOUR JOHNSON APP CON * <b>127.3 273.6</b>	KINSTON TOWER * <b>120.6 (CTAF) 0 335.55</b>	GND CON <b>121.9</b>	UNICOM <b>122.95</b>
-------------------------	---	---	-------------------------	-------------------------



CATEGORY	A	B	C	D
LPV DA		293/24	200 (200-½)	
LNAV/VNAV DA		486/35	393 (400-⅙)	
LNAV MDA	480/24	387 (400-½)	480/35	387 (400-⅙)
<b>C</b> CIRCLING	580-1	487 (500-1)	700-1¾ 607 (700-1¾)	740-2 647 (700-2)

# RNAV (GPS) RWY 5

SE-2, 11 JUL 2024 to 08 AUG 2024

SE-2, 11 JUL 2024 to 08 AUG 2024