

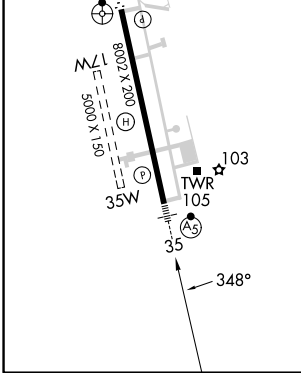
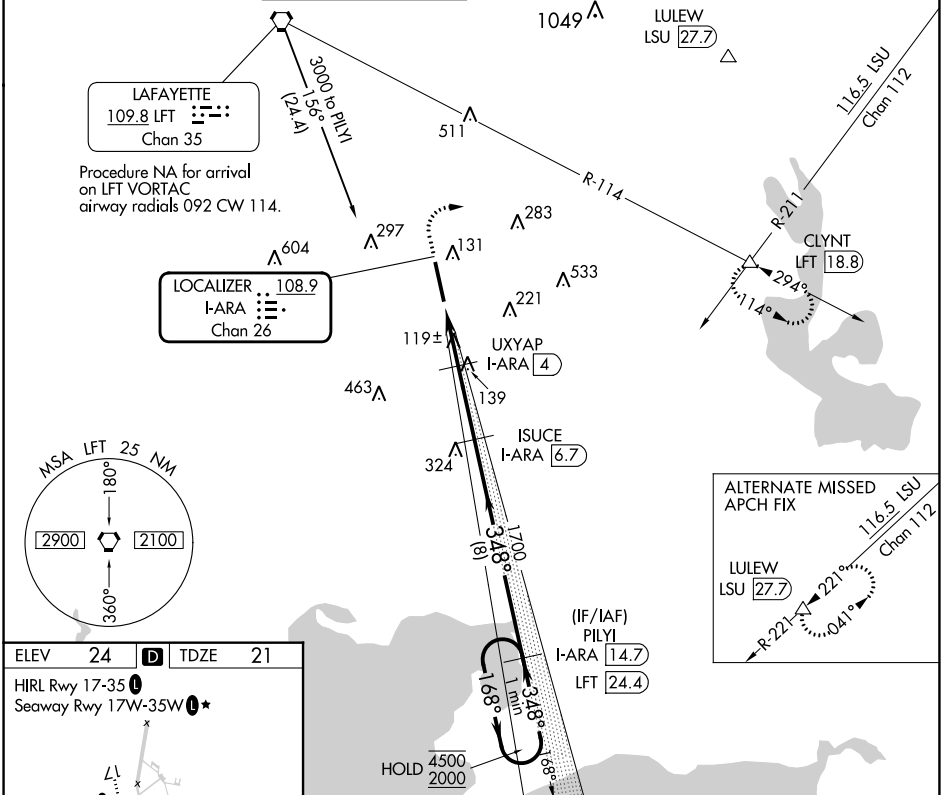
LOC/DME I-ARA 108.9 Chan 26	APP CRS 348°	Rwy Idg 8002 TDZE 21 Apt Elev 24
---	------------------------	---

ILS or LOC RWY 35

ACADIANA RGNL (A.R.A.)

DME required for procedure entry. DME required for LOC only.		MALSR 	MISSED APPROACH: Climb to 800 then climbing right turn to 2000 on heading 080° and LFT R-114 to CLYNT INT/LFT 18.8 DME and hold.
	Circling NA to Rwy's 17W and 35W. For inop ALS increase S-ILS 35 Cat E visibility to 3/4 SM and S-LOC 35 Cats C/D/E visibility to 1 1/8 SM.		

ASOS 133.325	LAFAYETTE APP CON* 121.1 268.7	ACADIANA TOWER* 125.0 (CTAF) 0 239.3	GND CON 121.7	CLNC DEL 121.7	CLNC DEL 118.05 (when twr closed)	UNICOM 122.95	0* 122.7
------------------------	--	--	-------------------------	--------------------------	--	-------------------------	---------------------------



800	2000	LFT R-114	CLYNT	ISUCE I-ARA [6.7]	PILIY I-ARA [14.7]	One Minute Holding Pattern
↑		hdg 080°	△			
*LOC only.		I-ARA [1.6]	*I-ARA [2.6]	UXYAP I-ARA [4]	1700	168° → 4500 ← 348° 2000
480*		4500 2000		1700		GS 3.00° TCH 5T
-1 NM		-1.4 NM		-2.7 NM		-8 NM
CATEGORY	A	B	C	D	E	
S-ILS 35	221-1/2 200 (200-1/2)					
S-LOC 35	440-3/4 419 (500-3/4)					
CIRCLING	440-1 416 (500-1)	480-1 456 (500-1)	600-1 1/2 576 (600-1 1/2)	680-2 656 (700-2)	900-3 876 (900-3)	

SC-4, 11 JUL 2024 to 08 AUG 2024

SC-4, 11 JUL 2024 to 08 AUG 2024